

Job or Customer :	
Location :	
Engineer :	
<input type="checkbox"/> Complies with Spec <input type="checkbox"/> Alternate	Notes :
Contractor :	
HeatLink Rep :	
Submitted By :	Date :
Approved By :	Date :
P.O. Number :	Date :

**Description**

Solid no lead (Eco) Brass PEX F1960 couplings for PEX-a potable water expansion systems.

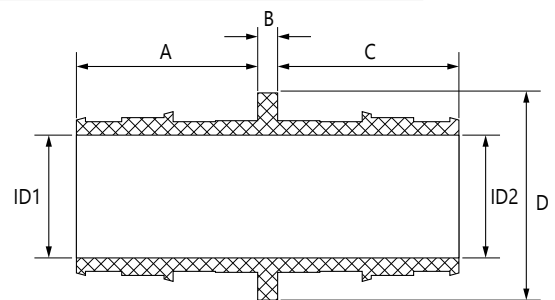
*The use of PEX tubing in a potable hot-water plumbing system with an operating temperature above 140°F (60°C) or system pressure above 80 psig (550 kPaG) or highly aggressive water quality or any combination thereof can significantly reduce the service life of the tubing.*

*HeatLink requires following the guidelines described in Plastics Pipe Institute TN-53, Guide to Chlorine Resistance Ratings of PEX Pipes and Tubing for Potable Water Applications and HeatLink INFO 37, Domestic Hot Water Recirculation Systems.*

Qty	Stk. #	Size	Dimension, in/(mm)						Weight, lb/(kg)
			A	B	C	D	ID1	ID2	
	EX29005NL	1/2" x 1/2"	0.71 (18.0)	0.12 (3.0)	0.71 (18.0)	0.71 (18.0)	0.38 (9.7)	0.38 (9.7)	0.059 (0.027)
	EX29022NL	3/4" x 3/4"	0.94 (24.0)	0.12 (3.0)	0.94 (24.0)	0.94 (24.0)	0.60 (15.2)	0.60 (15.2)	0.112 (0.051)
	EX29028NL	1" x 1"	1.18 (30.0)	0.12 (3.0)	1.18 (30.0)	1.18 (30.0)	0.80 (20.2)	0.80 (20.2)	0.214 (0.097)
	EX29225NL	3/4" x 1/2"	0.95 (24.1)	0.13 (3.3)	0.71 (18.0)	1.10 (27.9)	0.60 (15.2)	0.38 (9.7)	0.106 (0.048)
	EX29282NL	1" x 3/4"	1.18 (29.9)	0.13 (3.3)	0.95 (24.1)	1.38 (35.1)	0.80 (20.3)	0.60 (15.2)	0.192 (0.087)

**Technical Data**

Specifications	
Material	No Lead (Eco) Brass - C69300
Operating pressure rating	180°F @ 100 psi (82.2°C @ 0.69 MPa)



**Installation**

Installation must follow all of HeatLink's instructions and guidelines.

**Related Documents**

- F1960 PEX-a Potable Water Expansion System Installation Guide (L3240)
- HeatLink Limited Plumbing Warranty

Codes	Standards
IMC	ASTM E84
IPC	ASTM F877
IRC	ASTM F2159
NPC of Canada	CSA B137.5
NPSIC	NSF/ANSI 14
UMC	NSF/ANSI 61
UPC	NSF/ANSI 372
	ULC S102.2