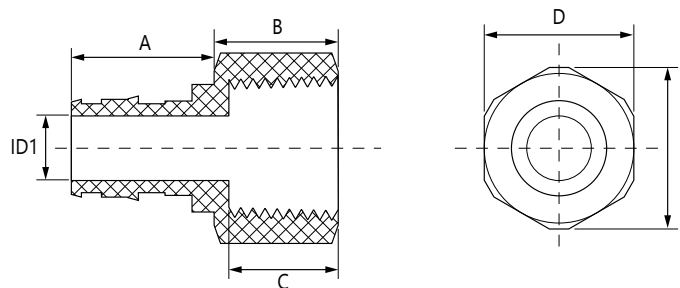


Job or Customer :	
Location :	
Engineer :	
<input type="checkbox"/> Complies with Spec <input type="checkbox"/> Alternate	Notes :
Contractor :	
HeatLink Rep :	
Submitted By :	Date :
Approved By :	Date :
P.O. Number :	Date :

Description

Solid no lead (Eco) Brass PEX F1960 × FNPT adapters for PEX-a potable water expansion systems.

Qty	Stk. #	Size	Dimension, in/(mm)					ID1	Weight, lb/(kg)
			A	B	C	D	E		
	EX27605NL	½" PEX × ½" FNPT	0.71 (18.0)	0.86 (21.8)	0.65 (16.5)	1.00 (25.4)	1.12 (28.4)	0.38 (9.7)	0.134 (0.061)
	EX27622NL	¾" PEX × ¾" FNPT	0.95 (24.1)	0.92 (23.4)	0.68 (17.3)	1.19 (30.2)	1.33 (33.8)	0.60 (15.2)	0.193 (0.088)
	EX27628NL	1" PEX × 1" FNPT	1.18 (29.9)	1.26 (32.0)	0.96 (24.4)	1.50 (38.1)	1.68 (42.7)	0.80 (20.3)	0.415 (0.188)
	EX27635NL	1¼" PEX × 1¼" FNPT	1.45 (36.8)	1.15 (29.2)	0.88 (22.4)	1.81 (46.0)	2.09 (53.1)	0.89 (22.6)	0.509 (0.231)
	EX27641NL	1½" PEX × 1½" FNPT	1.70 (43.2)	1.28 (32.5)	1.00 (25.4)	2.13 (54.1)	2.41 (61.2)	1.10 (27.9)	0.809 (0.367)



Technical Data

Specifications	
Material	No Lead (Eco) Brass - C69300
Operating pressure rating	180°F @ 100 psi (82.2°C @ 0.69 MPa)

Listings
 cNSFus-pw-G

Codes
 IAPMO UPC

Standards
 ASTM F877
 ASTM F1960
 CSA B137.5
 NSF/ANSI 14
 NSF/ANSI 61
 NSF/ANSI 372

Installation

Installation must follow all of HeatLink's instructions and guidelines.

Related Documents

- F1960 PEX-a Potable Water Expansion System Installation Guide (L3240)
- HeatLink Limited Plumbing Warranty

This page is intentionally blank.