

Job or Customer :	
Location :	
Engineer :	
<input type="checkbox"/> Complies with Spec <input type="checkbox"/> Alternate	Notes :
Contractor :	
HeatLink Rep :	
Submitted By :	Date :
Approved By :	Date :
P.O. Number :	Date :

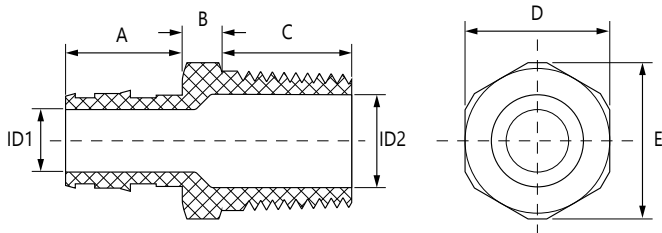
**Description**

Solid no lead (Eco) Brass PEX F1960 × MNPT adapters for PEX-a potable water expansion systems.

*The use of PEX tubing in a potable hot-water plumbing system with an operating temperature above 140°F (60°C) or system pressure above 80 psig (550 kPaG) or highly aggressive water quality or any combination thereof can significantly reduce the service life of the tubing.*

*HeatLink requires following the guidelines described in Plastics Pipe Institute TN-53, Guide to Chlorine Resistance Ratings of PEX Pipes and Tubing for Potable Water Applications and HeatLink INFO 37, Domestic Hot Water Recirculation Systems.*

Qty	Stk. #	Size	Dimension, in/(mm)							Weight, lb/(kg)
			A	B	C	D	E	ID1	ID2	
	EX27505NL	½ PEX × ½ MNPT	0.71 (18.0)	0.24 (6.0)	0.55 (14.0)	0.87 (22.0)	0.98 (25.0)	0.38 (9.7)	0.59 (15.0)	0.099 (0.045)
	EX27552NL	½ PEX × ¾ MNPT	0.71 (18.0)	0.26 (6.5)	0.59 (15.0)	1.08 (27.5)	1.22 (31.0)	0.38 (9.7)	0.79 (20.0)	0.123 (0.056)
	EX27522NL	¾ PEX × ¾ MNPT	0.94 (24.0)	0.26 (6.5)	0.59 (15.0)	1.08 (27.5)	1.22 (31.0)	0.60 (15.2)	0.79 (20.0)	0.190 (0.086)
	EX27521NL	¾ PEX × 1 MNPT	0.94 (24.0)	0.26 (6.5)	0.67 (17.0)	1.36 (34.5)	1.50 (38.0)	0.60 (15.2)	0.98 (25.0)	0.209 (0.095)
	EX27582NL	1 PEX × ¾ MNPT	1.18 (30.0)	0.26 (6.5)	0.59 (15.0)	1.08 (27.5)	1.22 (31.0)	0.80 (20.3)	0.80 (20.3)	0.179 (0.081)
	EX27528NL	1 PEX × 1 MNPT	1.18 (30.0)	0.26 (6.5)	0.67 (17.0)	1.36 (34.5)	1.50 (38.0)	0.80 (20.2)	0.98 (25.0)	0.335 (0.152)
	EX27535NL	1¼ PEX × 1¼ MNPT	1.44 (36.5)	0.26 (6.5)	0.83 (21.0)	1.69 (43.0)	1.85 (47.0)	0.96 (24.4)	1.24 (31.5)	0.496 (0.225)
	EX27541NL	1½ PEX × 1½ MNPT	1.69 (43.0)	0.24 (6.0)	1.02 (26.0)	2.01 (51.0)	2.20 (56.0)	1.09 (27.6)	1.50 (38.0)	0.655 (0.297)
	EX27554NL	2 PEX × 2 MNPT	2.15 (54.5)	0.50 (12.7)	1.06 (26.8)	2.44 (62.0)	2.68 (68.0)	1.55 (39.4)	2.01 (51.0)	1.731 (0.785)



**Listings**

ICC-ES PMG 1087  
 cNSFus-pw  
 cQALus P371  
 U.P. Code  
**Codes**  
 IMC  
 IPC  
 IRC  
 NPC of Canada  
 NSPC  
 UMC  
 UPC

**Standards**

ASTM E84  
 ASTM F877  
 ASTM F2159  
 CSA B137.5  
 NSF/ANSI 14  
 NSF/ANSI 61  
 NSF/ANSI 372  
 ULC S102.2

**Technical Data**

**Specifications**

Material	No Lead (Eco) Brass - C69300
Operating pressure rating	180°F @ 100 psi (82.2°C @ 0.69 MPa)

## Installation

Installation must follow all of HeatLink's instructions and guidelines.

## Related Documents

- F1960 PEX-a Potable Water Expansion System Installation Guide (L3240)
- HeatLink Limited Plumbing Warranty