

Job or Customer :	
Location :	
Engineer :	
<input type="checkbox"/> Complies with Spec <input type="checkbox"/> Alternate	Notes :
Contractor :	
HeatLink Rep :	
Submitted By :	Date :
Approved By :	Date :
P.O. Number :	Date :

### Description

Solid no lead (Eco) Brass PEX F1960 x female sweat adapters for PEX-a potable water expansion systems.

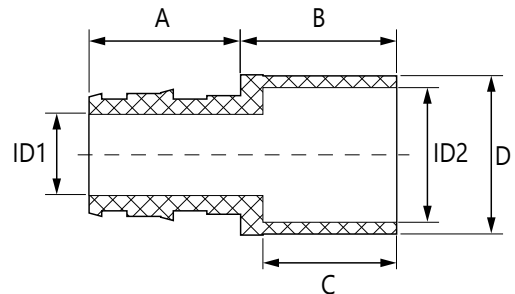
*The use of PEX tubing in a potable hot-water plumbing system with an operating temperature above 140°F (60°C) or system pressure above 80 psig (550 kPaG) or highly aggressive water quality or any combination thereof can significantly reduce the service life of the tubing.*

*HeatLink requires following the guidelines described in Plastics Pipe Institute TN-53, Guide to Chlorine Resistance Ratings of PEX Pipes and Tubing for Potable Water Applications and HeatLink INFO 37, Domestic Hot Water Recirculation Systems.*

Qty	Stk. #	Size	Dimension, in/(mm)						Weight, lb/(kg)
			A	B	C	D	ID1	ID2	
	EX27205NL	½" PEX × ½" F/Sweat	0.71 (18.0)	0.57 (14.5)	0.50 (12.7)	0.75 (19.0)	0.38 (9.7)	0.63 (15.9)	0.057 (0.026)
	EX27222NL	¾" PEX × ¾" F/Sweat	0.94 (24.0)	0.85 (21.5)	0.76 (19.2)	1.02 (26.0)	0.60 (15.2)	0.88 (22.3)	0.112 (0.051)
	EX27228NL	1" PEX × 1" F/Sweat	1.18 (30.0)	1.00 (25.5)	0.91 (23.2)	1.30 (33.0)	0.80 (20.2)	1.13 (28.7)	0.225 (0.102)
	EX27235NL	1¼" PEX × 1¼" F/Sweat	1.44 (36.5)	1.08 (27.5)	0.97 (24.7)	1.54 (39.0)	0.96 (24.4)	1.38 (35.0)	0.315 (0.143)
	EX27241NL	1½" PEX × 1½" F/Sweat	1.69 (43.0)	1.22 (31.0)	1.10 (28.0)	1.85 (47.0)	1.09 (27.6)	1.63 (41.4)	0.505 (0.229)
	EX27254NL	2" PEX × 2" F/Sweat	2.15 (54.5)	1.46 (37.0)	1.34 (34.0)	2.36 (60.0)	1.37 (34.9)	2.13 (54.1)	0.937 (0.425)

### Technical Data

Specifications	
Material	No Lead (Eco) Brass - C69300
Operating pressure rating	180°F @ 100 psi (82.2°C @ 0.69 MPa)



### Installation

Installation must follow all of HeatLink's instructions and guidelines.

### Related Documents

- F1960 PEX-a Potable Water Expansion System Installation Guide (L3240)
- HeatLink Limited Plumbing Warranty

Listings	Codes	Standards
ICC-ES PMG 1087	IMC	ASTM E84
cNSFus-pw	IPC	ASTM F877
cQAlus P371	IRC	ASTM F2159
U.P. Code	NPC of Canada	CSA B137.5
	NSPC	NSF/ANSI 14
	UMC	NSF/ANSI 61
	UPC	NSF/ANSI 372
		ULC S102.2