

Job or Customer :	
Location :	
Engineer :	
<input type="checkbox"/> Complies with Spec <input type="checkbox"/> Alternate	Notes :
Contractor :	
HeatLink Rep :	
Submitted By :	Date :
Approved By :	Date :
P.O. Number :	Date :

Description

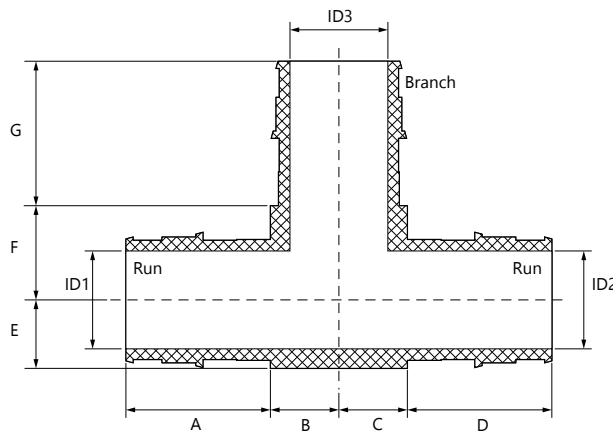
Solid no lead (Eco) Brass PEX F1960 tees for PEX-a potable water expansion systems.

The use of PEX tubing in a potable hot-water plumbing system with an operating temperature above 140°F (60°C) or system pressure above 80 psig (550 kPaG) or highly aggressive water quality or any combination thereof can significantly reduce the service life of the tubing.

HeatLink requires following the guidelines described in Plastics Pipe Institute TN-53, Guide to Chlorine Resistance Ratings of PEX Pipes and Tubing for Potable Water Applications and HeatLink INFO 37, Domestic Hot Water Recirculation Systems.

PEX F1960 Tees

Qty	Stk. #	Size (run × run × branch)	Dimension, in/(mm)										Weight, lb/(kg)
			A	B	C	D	E	F	G	ID1	ID2	ID3	
	EX26555NL	½" × ½" × ½"	0.70 (17.8)	0.32 (8.1)	0.32 (8.1)	0.70 (17.8)	0.30 (7.6)	0.50 (12.7)	0.70 (18.1)	0.40 (10.2)	0.40 (10.2)	0.40 (10.2)	0.132 (0.060)
	EX26222NL	¾" × ¾" × ¾"	0.95 (24.1)	0.45 (11.4)	0.45 (11.4)	0.95 (24.1)	0.47 (11.9)	0.64 (16.3)	0.95 (24.1)	0.60 (15.2)	0.60 (15.2)	0.60 (15.2)	0.293 (0.133)
	EX26888NL	1" × 1" × 1"	1.18 (30.0)	0.73 (18.5)	0.73 (18.5)	1.18 (30.0)	0.59 (15.0)	0.73 (18.5)	1.18 (30.0)	0.80 (20.2)	0.80 (20.2)	0.80 (20.2)	0.445 (0.202)



Listings

ICC-ES PMG 1087
 cNSFus-pw
 cQALus P371
 U.P. Code

Codes

IMC
 IPC
 IRC
 NPC of Canada
 NSPC
 UMC
 UPC

Standards

ASTM E84
 ASTM F877
 ASTM F2159
 CSA B137.5
 NSF/ANSI 14
 NSF/ANSI 61
 NSF/ANSI 372
 ULC S102.2

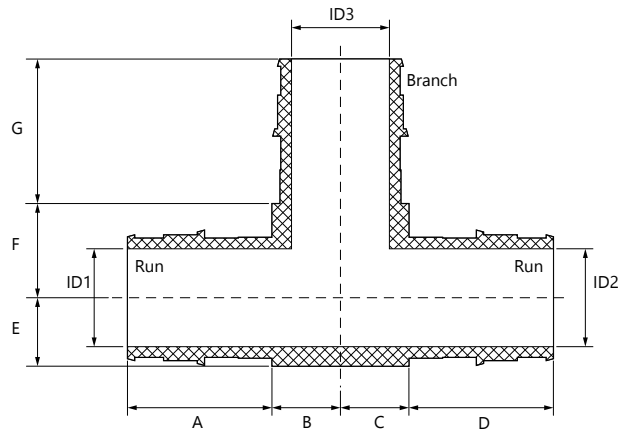
Technical Data

Specifications

Material	No Lead (Eco) Brass - C69300
Operating pressure rating	180°F @ 100 psi (82.2°C @ 0.69 MPa)

PEX F1960 Reducing Tees

Qty	Stk. #	Size (run × run × branch)	Dimension, in/(mm)										Weight, lb/(kg)
			A	B	C	D	E	F	G	ID1	ID2	ID3	
	EX26255NL	¾" × ½" × ½"	0.94 (24.0)	0.45 (11.5)	0.45 (11.5)	0.71 (18.0)	0.47 (12.0)	0.57 (14.5)	0.71 (18.0)	0.60 (15.2)	0.38 (9.7)	0.38 (9.7)	0.205 (0.093)
	EX26252NL	¾" × ½" × ¾"	0.90 (22.9)	0.45 (11.4)	0.45 (11.4)	0.70 (17.8)	0.50 (12.7)	0.60 (15.2)	0.90 (22.9)	0.60 (15.2)	0.40 (10.2)	0.60 (15.2)	0.264 (0.120)
	EX26225NL	¾" × ¾" × ½"	0.90 (22.9)	0.45 (11.4)	0.45 (11.4)	0.90 (22.9)	0.50 (12.7)	0.70 (17.8)	0.70 (17.8)	0.60 (15.2)	0.60 (15.2)	0.40 (10.2)	0.283 (0.128)
	EX26822NL	1" × ¾" × ¾"	1.20 (30.5)	0.56 (14.2)	0.56 (14.2)	0.90 (22.9)	0.60 (15.2)	0.80 (20.3)	0.90 (22.9)	0.80 (20.3)	0.60 (15.2)	0.60 (15.2)	0.455 (0.206)
	EX26885NL	1" × 1" × ½"	1.18 (30.0)	0.45 (11.5)	0.45 (11.5)	1.18 (30.0)	0.59 (15.0)	0.73 (18.5)	0.71 (18.0)	0.80 (20.2)	0.80 (20.2)	0.38 (9.7)	0.331 (0.150)
	EX26882NL	1" × 1" × ¾"	1.20 (30.5)	0.56 (14.2)	0.56 (14.2)	1.20 (30.5)	0.60 (15.2)	0.80 (20.3)	0.90 (22.9)	0.80 (20.3)	0.80 (20.3)	0.60 (15.2)	0.492 (0.223)



Installation

Installation must follow all of HeatLink's instructions and guidelines.

Related Documents

- F1960 PEX-a Potable Water Expansion System Installation Guide (L3240)
- HeatLink Limited Plumbing Warranty