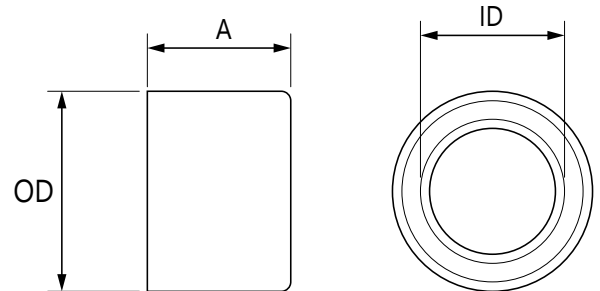


Job or Customer :	
Location :	
Engineer :	
<input type="checkbox"/> Complies with Spec <input type="checkbox"/> Alternate	Notes :
Contractor :	
HeatLink Rep :	
Submitted By :	Date :
Approved By :	Date :
P.O. Number :	Date :

Description

PEX-a expansion rings with stop for use with PEX F1960 fittings.

Qty	Stk. #	Size	Dimension, in/(mm)			Weight, lb/(kg)
			A	OD	ID	
	EX24205	½"	0.64 (16.3)	0.87 (22.1)	0.62 (15.7)	0.007 (0.003)
	EX24219	⅝"	0.77 (19.5)	1.00 (25.4)	0.76 (19.3)	0.009 (0.004)
	EX24222	¾"	0.86 (21.8)	1.11 (28.2)	0.87 (22.1)	0.013 (0.006)
	EX24228	1"	1.11 (28.2)	1.41 (35.1)	1.13 (28.7)	0.022 (0.010)
	EX24235	1¼"	1.37 (34.8)	1.66 (42.2)	1.38 (35.1)	0.030 (0.014)
	EX24241	1½"	1.62 (41.1)	1.94 (49.3)	1.65 (41.9)	0.040 (0.018)
	EX24250	2"	2.00 (50.8)	2.65 (67.3)	2.15 (54.6)	0.120 (0.054)



Technical Data

Specifications

Material	Crosslinked Polyethylene (PEX-a)
Maximum Temperature	200°F (93.3°C)

Listings

ICC-ES PMG 1087
NSF-pw
cQAlus P371

Codes

IMC
IPC
IRC
NPC of Canada
NSPC
UMC
UPC

Standards

ASTM E84
ASTM F1960
ASTM F877
CSA B137.5
NSF/ANSI 14
ULC S102.2

Installation

Installation must follow all of HeatLink's instructions and guidelines.

Related Documents

- PEX-a F1960 Potable Water Expansion System Installation Guide (L3240)
- HeatLink Limited Plumbing Warranty

This page is intentionally blank.