

Job or Customer :	
Location :	
Engineer :	
<input type="checkbox"/> Complies with Spec <input type="checkbox"/> Alternate	Notes :
Contractor :	
HeatLink Rep :	
Submitted By :	Date :
Approved By :	Date :
P.O. Number :	Date :

**Description**

High Performance Polymer PEX F1960 × swivel adapter for PEX-a potable water expansion systems.

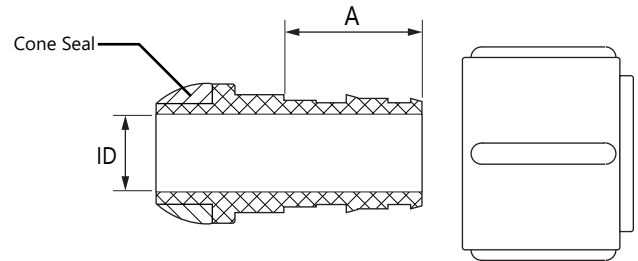
*The use of PEX tubing in a potable hot-water plumbing system with an operating temperature above 140°F (60°C) or system pressure above 80 psig (550 kPaG) or highly aggressive water quality or any combination thereof can significantly reduce the service life of the tubing.*

*HeatLink requires following the guidelines described in Plastics Pipe Institute TN-53, Guide to Chlorine Resistance Ratings of PEX Pipes and Tubing for Potable Water Applications and HeatLink INFO 37, Domestic Hot Water Recirculation Systems.*

Qty	Stk. #	Size	Dimension, in/(mm)		Weight, lb/(kg)
			A	ID1	
	EX17755	½" PEX × ½" NPSM Swivel	0.707 (18.0)	0.405 (10.3)	0.037 (0.010)

**Technical Data**

Specifications	
Material	PPSU
Operating Pressure rating	180°F @ 100psi (82.2°C @ 0.69MPa)



<b>Listings</b>	<b>Codes</b>	<b>Standards</b>
ICC-E5 PMG 1087	IMC	ASTM E84
cNSFus-pw	IPC	ASTM F877
cQALus P371	IRC	ASTM F2159
U.P. Code	NPC of Canada	CSA B137.5
	NSPC	NSF/ANSI 14
	UMC	NSF/ANSI 61
	UPC	NSF/ANSI 372
		ULC S102.2

**Installation**

Installation must follow all of HeatLink's instructions and guidelines.

**Related Documents**

- PEX-a F1960 Potable Water Expansion System Installation Guide (L3240)
- HeatLink Limited Plumbing Warranty