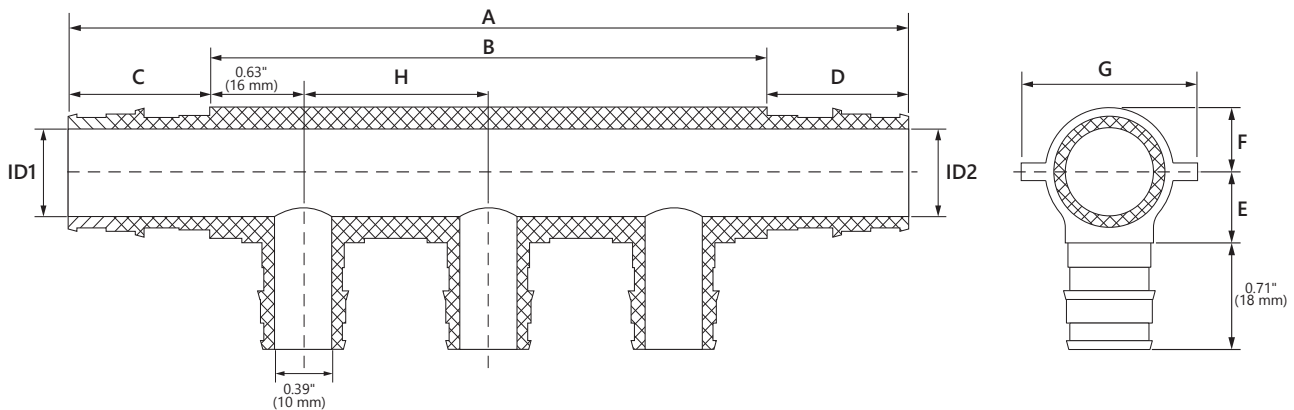


Job or Customer :	
Location :	
Engineer :	
<input type="checkbox"/> Complies with Spec <input type="checkbox"/> Alternate	Notes :
Contractor :	
HeatLink Rep :	
Submitted By :	Date :
Approved By :	Date :
P.O. Number :	Date :

Description

Open at both ends with 3/4" or 1" PEX F1960 connections. 1/2" PEX F1960 branches in a single row. Used with PEX-a potable water expansion systems.

Qty	Stk. #	# of Ports	Dimension, in/(mm)											Weight, (lb/kg)	
			Inlet	Outlet	A	B	C	D	E	F	G	H	ID1		ID2
	EX14202	2	3/4"	3/4"	4.40 (111.75)	2.51 (63.75)	0.95 (24.0)	0.95 (24.0)	0.47 (12.0)	0.43 (11.0)	1.18 (30.0)	1.25 (31.8)	0.59 (15.0)	0.59 (15.0)	0.062 (0.028)
	EX14203	3	3/4"	3/4"	5.63 (143.5)	3.76 (95.5)	0.95 (24.0)	0.95 (24.0)	0.47 (12.0)	0.43 (11.0)	1.18 (30.0)	1.25 (31.8)	0.59 (15.0)	0.59 (15.0)	0.085 (0.039)
	EX14204	4	3/4"	3/4"	7.64 (194.3)	5.76 (146.3)	0.95 (24.0)	0.95 (24.0)	0.47 (12.0)	0.43 (11.0)	1.18 (30.0)	1.5 (38.1)	0.59 (15.0)	0.59 (15.0)	0.120 (0.054)
	EX14706	6	1"	3/4"	8.54 (216.75)	6.41 (162.75)	1.18 (29.9)	0.95 (24.0)	0.58 (14.8)	0.55 (14.0)	1.50 (38.0)	1.25 (31.8)	0.79 (20.0)	0.59 (15.0)	0.205 (0.093)



Technical Data

Specifications	
Material	PPSU
Operating Pressure rating	180°F @ 100psi (82.2°C @ 0.69MPa)

Listings

cNSFus-pw-G

Codes

IAPMO UPC

Standards

ASTM F1960	NSF/ANSI 14
ASTM F877	NSF/ANSI 61
CSA B137.5	NSF/ANSI 372

Installation

Installation must follow all of HeatLink's instructions and guidelines.

Related Documents

- PEX-a F1960 Potable Water Expansion System Installation Guide (L3240)
- HeatLink Limited Plumbing Warranty

This page is intentionally blank.