


Job or Customer :	
Location :	
Engineer :	
<input type="checkbox"/> Complies with Spec <input type="checkbox"/> Alternate	Notes :
Contractor :	
HeatLink Rep :	
Submitted By :	Date :
Approved By :	Date :
P.O. Number :	Date :

### Description

Solid brass fitting attaches to the end of the PEX tubing and allows for easy installation onto the bottom of the manifold. Packaged in pairs.

Pair Qty	Stk. #	PEX Size	Dim A	Dim B, in/(mm)	Dim C, in/(mm)	Dim D		Weight (pair), lb/(kg)
	77105	1/2"	G 3/4"	0.638 (16.2)	0.465 (11.8)	EK20	1.06 (27)	0.24 (0.11)
	77119	5/8"	G 3/4"	0.764 (19.4)	0.559 (14.2)	EK20	1.18 (30)	0.33 (0.15)
	77122	3/4"	G 3/4"	0.875 (22.2)	0.669 (17.0)	EK20	1.25 (31.8)	0.44 (0.20)


### Technical Data

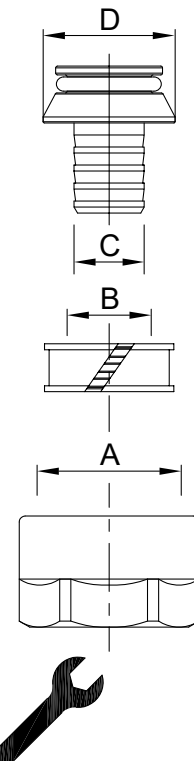
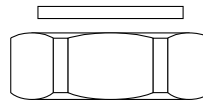
#### Specifications

Material - Metal Components	Brass
Material - O-ring	EPDM
Max Operating Pressure	100 psi (6.9 bar)
Operating Temperature	160°F (70°C)
Max Temperature	195°F (90°C)
Min Operating Temperature	36°F (2°C); 0°F (-18°C) with anti-freeze

### Port Caps for Stainless Steel Manifolds

Caps off unused ports on the Stainless Steel Manifold. Includes fiber gasket.

Pair Qty	Stk. #	Dim A		Weight (pair), lb/(kg)
	77100	G 3/4"	1.18 (30)	0.15 (0.07)



### Installation

Installation must follow all of HeatLink's instructions and guidelines.

### Maintenance

Maintenance must follow all of HeatLink's instructions and guidelines.

### Related Documents

- 1-1/4" Stainless Steel Manifold Assembly Instructions (L675100/L675200)
- HeatLink Limited Heating Warranty

*This page is intentionally blank.*