

Job or Customer :	
Location :	
Engineer :	
<input type="checkbox"/> Complies with Spec <input type="checkbox"/> Alternate	Notes :
Contractor :	
HeatLink Rep :	
Submitted By :	Date :
Approved By :	Date :
P.O. Number :	Date :

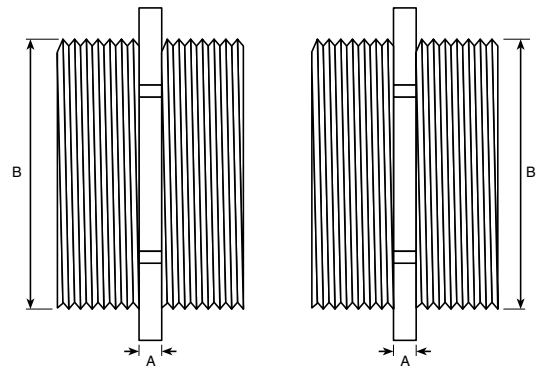
Description

Coupling used to connect 2" SS manifolds together. Loctite 55 Pipe Sealing Cord is recommended for sealing the threads.

Technical Data

Material..... Stainless Steel
 Max Working Pressure 145 psi (10 bar)
 Max. Working Temperature 212°F (100°C)

Qty	Stk. #	Dimension	
		A	B
	76600	3/16" (5 mm)	2" MBSP



Installation

Installation of stainless steel manifolds must follow all of HeatLink's instructions and guidelines.

Maintenance

Maintenance of stainless steel manifolds must follow all of HeatLink's instructions and guidelines.

Related Documents

- Stainless Steel Manifold Assembly Instructions (L676600)
- HeatLink Limited Heating Warranty

This page is intentionally blank.