

Job or Customer :	
Location :	
Engineer :	
<input type="checkbox"/> Complies with Spec <input type="checkbox"/> Alternate	Notes :
Contractor :	
HeatLink Rep :	
Submitted By :	Date :
Approved By :	Date :
P.O. Number :	Date :

Description

The supply manifold comes with a 1" FNPT isolation valve, thermometer, and hose bib/air vent. A valve provides flow balancing for each loop.

The return manifold comes with a 1" FNPT isolation valve, thermometer, and hose bib/air vent. A valve provides on/off manual control to allow isolation of individual loops for each loop. The valve accepts optional actuators for automated control.

Two metal mounting brackets are included.
PEX to manifold connectors are sold separately.

Qty	Stk. #	# of Loops	Width A, in/(mm)	Weight, lb/(kg)
	75202	2	10 (254)	7.5 (3.4)
	75203	3	12 (304)	8.6 (3.9)
	75204	4	13-15/16 (354)	9.7 (4.4)
	75205	5	15-15/16 (404)	10.8 (4.9)
	75206	6	17-7/8 (454)	11.9 (5.4)
	75207	7	19-7/8 (504)	13.1 (5.9)
	75208	8	21-13/16 (554)	14.2 (6.4)
	75209	9	23-13/16 (604)	15.3 (6.9)
	75210	10	25-3/4 (654)	16.4 (7.4)
	75211	11	27-3/4 (704)	17.5 (7.9)
	75212	12	29-11/16 (754)	18.6 (8.4)

Technical Data

	Specifications
Material - Body	Stainless Steel ASTM/AISI304 EN10088 1.4306
Material - Components	ASTM B124 C37700 (CW614N and CW617N)
Material - Brackets	Carbon steel white zinc plated with rubber isolation supports
Max Operating Pressure	145 psi (10 bar)
Max Test Pressure	232 psi at 70°F (16 bar @ 21°C)
Max Pressure Differential across (closed) valve with 56200 series or 56121 actuator	36 psi (2.5 bar)
Maximum Trunk Flow Rate	18 US gpm (4.1 m ³ /h)
Maximum Circuit Flow Rate	2.5 US gpm (0.57 m ³ /h)
Min Operating Temperature	32°F (0°C)
Max Operating Temperature	185°F (85°C)
Thermometer Scale	32-175°F (0-80°C)
Supply Balancing Valve (full open)	Cv 5.1 (Kv 4.4)
Return Zone Valve (full open)	Cv 3.24 (Kv 2.8)
Global Flow Coefficient (supply + return combined)	Cv 2.73 (Kv 2.36)
Manifold Union	G1" Female
Full Port Ball Valve Connections	1" FNPT x G1" Male
Loop Connection	G3/4" Eurocone (EK20)
Hosebib Connection	3/4" GHT
Max Glycol Percentage	60%
Manifold Actuator Thread	M30 x 1.5

Dimension A:

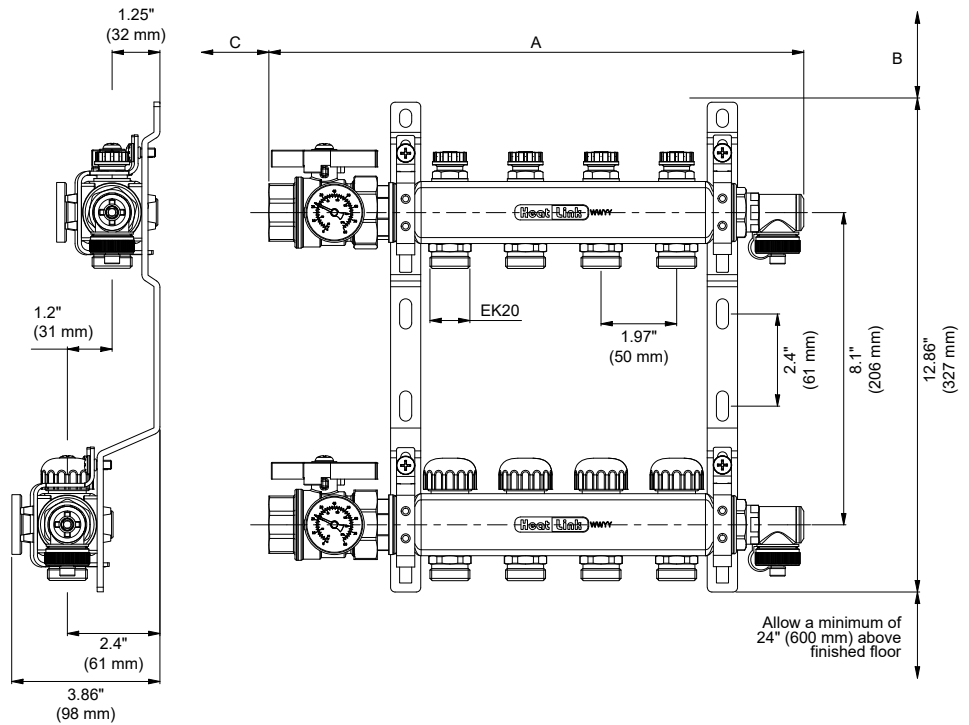
Width dimensions in table do not include zone valve, or necessary fittings for connection.

Dimension B:

Allow for a minimum of 6" (150 mm) clearance from top of manifold to frame opening for StatLink® Module rough in.

Dimension C:

Allow for a minimum of 6" (150 mm) clearance from the supply/return end connections to the side frame for supply/return piping that turns up or down. If straight supply/return piping is used, allow for a minimum of 12" (300 mm) or if zone valves are used, a minimum of 18" (450 mm). Be aware that the minimum distance will vary according to the supply/return piping arrangement.



Installation

Installation must follow all of HeatLink's instructions and guidelines.

Maintenance

Maintenance must follow all of HeatLink's instructions and guidelines.

Related Documents

- 1-1/4" Stainless Steel Manifold Assembly Instructions (L675200)
- HeatLink Limited Heating Warranty

