

Job or Customer :	
Location :	
Engineer :	
<input type="checkbox"/> Complies with Spec <input type="checkbox"/> Alternate	Notes :
Contractor :	
HeatLink Rep :	
Submitted By :	Date :
Approved By :	Date :
P.O. Number :	Date :

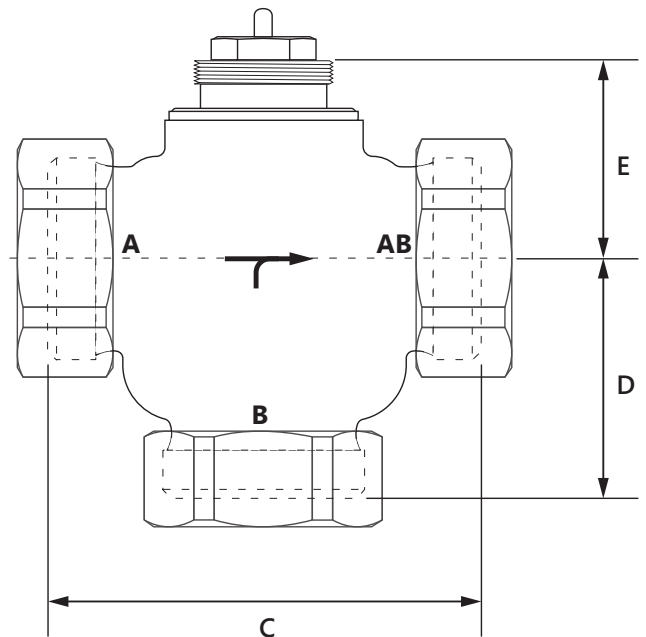
Description

Three-way mixing valve for fluid temperature control in heating and cooling systems, and can be used in diverting or mixing applications. Used with HeatLink actuators or thermostatic heads, the valve is normally closed.

Qty	Size	Stk. #	Dimension in/(mm)			Cv	Kv	Nipples	Max Pressure Differential	Weight lb/(kg)
			C	D	E					
	¾"	63720V	3.2 (81.3)	1.9 (47)	1.6 (40.6)	5.1	4.4	¾" Female Sweat ×3	66.9 ft hd 2 bar	1.86 (0.844)
	1"	63725V	3.6 (91.4)	2.0 (50)	1.6 (40.6)	6.6	5.7	1" Female Sweat ×3	33.5 ft hd 1 bar	2.40 (1.089)

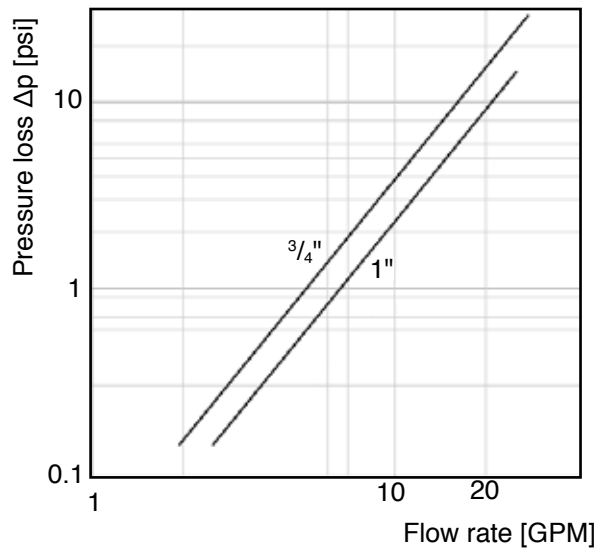
Technical Data

	Specifications
Material - Valve body	Corrosion resistant bronze
Material - Inner parts	Brass and stainless steel
Material - Valve insert seals and O-rings	EPDM
Material - Nipples	Brass
Min. operating temperature	14°F (-10°C)
Max. operating temperature	248°F (120°C)
Max. operating pressure	335 ft hd (10 bar)
Actuator thread	M 30×1.5



Valve closed:	Valve open:
A-AB is open	A-AB is closed
B-AB is closed	B-AB is open

Performance Data:



Installation

Installation must follow all of HeatLink's instructions and guidelines, including those in the Installation Guide.

Related Documents

- Compact Mixing Valve Installation Instructions (L663700V)
- HeatLink Limited Heating Warranty