

Job or Customer :	
Location :	
Engineer :	
<input type="checkbox"/> Complies with Spec <input type="checkbox"/> Alternate	Notes :
Contractor :	
HeatLink Rep :	
Submitted By :	Date :
Approved By :	Date :
P.O. Number :	Date :

Description

Solid no lead brass PEX insert x PEX insert couplings.

Listings

cNSFus-pw

Standards

ASTM F877
ASTM F1807
CSA B137.5
NSF/ANSI 14
NSF/ANSI 61
NSF/ANSI 372

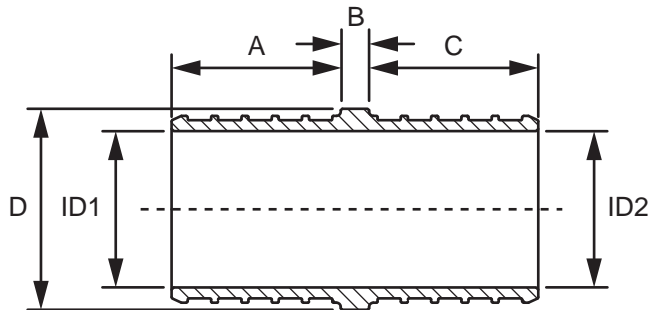
Technical Data

Material:..... No Lead (Eco) Brass - C69300
Operating Pressure Rating:..... 180°F @ 100 psi (82.2°C @ 0.69 MPa)

Codes

IAPMO UPC

Dimension Diagram



Installation

Installation must follow all of HeatLink's instructions and guidelines.

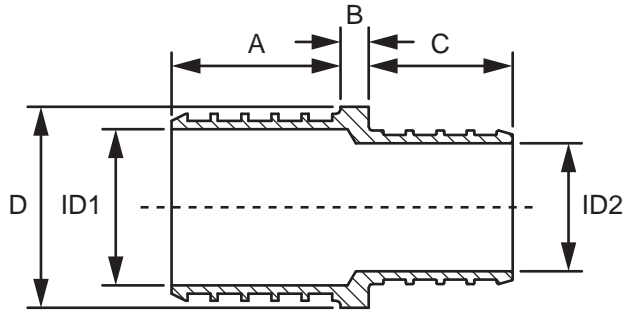
Related Documents

- HeatLink Limited Plumbing Warranty

PEX Insert Couplings

Qty	Stk. #	Size	Dimension, in / (mm)						Weight, lb / (kg)
			A	B	C	D	ID1	ID2	
	29005NL	1/2" x 1/2" PEX	0.63 (16.0)	0.12 (3.0)	0.63 (16.0)	0.55 (14.0)	0.35 (8.9)	0.35 (8.9)	0.029 (0.013)
	29022NL	3/4" x 3/4" PEX	0.63 (16.0)	0.12 (3.0)	0.63 (16.0)	0.75 (19.0)	0.53 (13.5)	0.53 (13.5)	0.046 (0.021)
	29028NL	1" x 1" PEX	0.81 (20.5)	0.12 (3.0)	0.81 (20.5)	0.94 (24.0)	0.71 (18.0)	0.71 (18.0)	0.079 (0.036)
	29035NL	1 1/4" x 1 1/4" PEX	0.94 (24.0)	0.16 (4.0)	0.94 (24.0)	1.12 (28.5)	0.87 (22.1)	0.87 (22.1)	0.130 (0.059)
	29041NL	1 1/2" x 1 1/2" PEX	1.15 (29.2)	0.24 (6.1)	1.15 (29.2)	1.38 (35.0)	1.04 (26.5)	1.04 (26.5)	0.202 (0.092)
	29054NL	2" x 2" PEX	1.50 (38.1)	0.37 (9.4)	1.50 (38.1)	1.69 (43.0)	1.37 (34.7)	1.37 (34.7)	0.439 (0.199)

Dimension Diagram



PEX Insert Reducing Couplings

Qty	Stk. #	Size	Dimension, in / (mm)				ID1	ID2	Weight, lb / (kg)
			A	B	C	D			
	29225NL	¾" x ½" PEX	0.63 (16.0)	0.12 (3.0)	0.63 (16.0)	0.75 (19.0)	0.53 (13.5)	0.35 (8.9)	0.040 (0.018)
	29282NL	1" x ¾" PEX	0.81 (20.5)	0.12 (3.0)	0.63 (16.0)	0.94 (24.0)	0.71 (18.0)	0.53 (13.5)	0.073 (0.033)
	29238NL	1 ¼" x 1" PEX	0.94 (24.0)	0.16 (4.0)	0.81 (20.5)	1.12 (28.5)	0.87 (22.1)	0.71 (18.0)	0.112 (0.051)
	29248NL	1 ½" x 1" PEX	1.15 (29.2)	0.23 (5.8)	0.81 (20.5)	1.38 (35.0)	1.04 (26.5)	0.71 (18.0)	0.171 (0.078)
	29243NL	1 ½" x 1 ¼" PEX	1.15 (29.2)	0.25 (6.4)	0.94 (24.0)	1.30 (33.0)	1.04 (26.5)	0.87 (22.1)	0.190 (0.086)
	29263NL	2" x 1 ¼" PEX	1.50 (38.1)	0.37 (9.4)	0.94 (24.0)	1.69 (43.0)	1.37 (34.7)	0.87 (22.1)	0.364 (0.165)
	29264NL	2" x 1 ½" PEX	1.50 (38.1)	0.37 (9.4)	1.15 (29.2)	1.69 (43.0)	1.37 (34.7)	1.04 (26.5)	0.381 (0.173)