

Job or Customer :	
Location :	
Engineer :	
<input type="checkbox"/> Complies with Spec <input type="checkbox"/> Alternate	Notes :
Contractor :	
HeatLink Rep :	
Submitted By :	Date :
Approved By :	Date :
P.O. Number :	Date :

Description

Solid no lead brass adapter for connecting faucets.

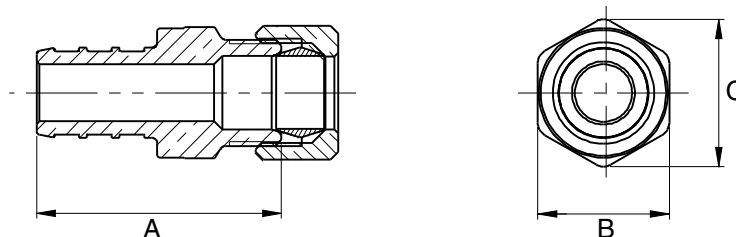
The use of PEX tubing in a potable hot-water plumbing system with an operating temperature above 140°F (60°C) or system pressure above 80 psig (550 kPaG) or highly aggressive water quality or any combination thereof can significantly reduce the service life of the tubing.

HeatLink requires following the guidelines described in Plastics Pipe Institute TN-53, Guide to Chlorine Resistance Ratings of PEX Pipes and Tubing for Potable Water Applications and HeatLink INFO 37, Domestic Hot Water Recirculation Systems.

Qty	Stk. #	Size	Dimensions in/(mm)				ID	Weight
			A	B	C			
	25751NL	1/2" PEX x 3/8" O.D.	1.17 (29.8)	0.63 (15.9)	0.70 (17.7)		0.35 (8.9)	0.59 oz (17.0 g)

Technical Data

	Specifications
Material	No Lead (Eco) Brass - C69300
Max. working pressure	100 psi
Tested pressure	100 psi
Maximum temperature	180°F / 82°C



Installation

Installation must follow all of HeatLink's instructions and guidelines.

Related Documents

HeatLink Limited Plumbing Warranty

Standards / Listings

ANSI/NSF-14
 ANSI/NSF-61 Annex G
 ASTM F1807
 ASTM F877