

Job or Customer :	
Location :	
Engineer :	
<input type="checkbox"/> Complies with Spec <input type="checkbox"/> Alternate	Notes :
Contractor :	
HeatLink Rep :	
Submitted By :	Date :
Approved By :	Date :
P.O. Number :	Date :

Description

Solid no lead brass PEX insert plug.

Listings

cNSFus-pw

Standards

ASTM F877
 ASTM F1807
 CSA B137.5
 NSF/ANSI 14
 NSF/ANSI 61
 NSF/ANSI 372

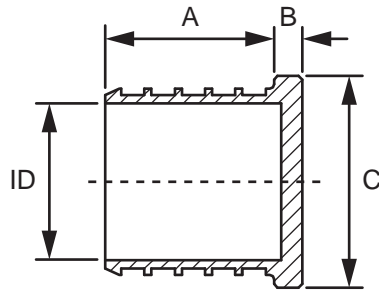
Technical Data

Material:..... No Lead (Eco) Brass - C69300
 Operating Pressure Rating:..... 180°F @ 100 psi (82.2°C @ 0.69 MPa)

Codes

IAPMO UPC

Dimensional Drawing



Installation

Installation must follow all of HeatLink's instructions and guidelines.

Related Documents

- HeatLink Limited Plumbing Warranty

Qty	Stk. #	Size	Dimension, in / (mm)			ID	Weight, lb / (kg)
			A	B	C		
	25005NL	½" PEX	0.63 (16.0)	0.12 (3.0)	0.55 (14.0)	0.35 (8.9)	0.020 (0.009)
	25022NL	¾" PEX	0.63 (16.0)	0.12 (3.0)	0.75 (19.0)	0.53 (13.5)	0.033 (0.015)
	25028NL	1" PEX	0.81 (20.5)	0.12 (3.0)	0.94 (24.0)	0.71 (18.0)	0.060 (0.027)
	25035NL	1 ¼" PEX	0.94 (24.0)	0.16 (4.0)	1.18 (30.0)	0.87 (22.1)	0.104 (0.047)
	25041NL	1 ½" PEX	1.15 (29.2)	0.23 (5.8)	1.61 (41.0)	1.04 (26.5)	0.255 (0.116)
	25054NL	2" PEX	1.50 (38.1)	0.35 (8.9)	1.69 (43.0)	1.37 (34.7)	0.384 (0.174)

This page is intentionally blank.