

Job or Customer :	
Location :	
Engineer :	
<input type="checkbox"/> Complies with Spec <input type="checkbox"/> Alternate	Notes :
Contractor :	
HeatLink Rep :	
Submitted By :	Date :
Approved By :	Date :
P.O. Number :	Date :

Description

High Performance Polymer PEX insert elbows.

Listings

cNSFus-pw

Standards

ASTM F877
ASTM F2159
CSA B137.5
NSF/ANSI 14
NSF/ANSI 61
NSF/ANSI 372

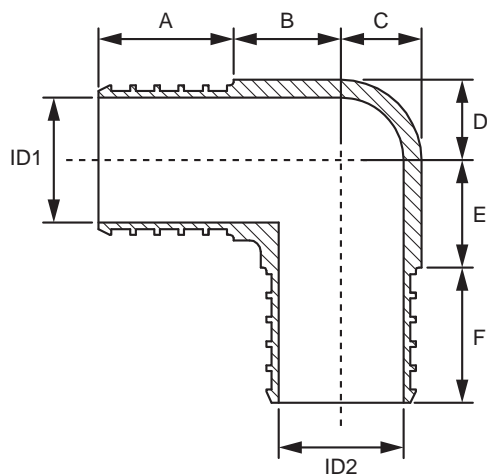
Technical Data

Material:..... Modified Polyphenylsulfone
Operating Pressure Rating:..... 180°F @ 100 psi (82.2°C @ 0.69 MPa)

Codes

IAPMO UPC

Dimension Diagram



Installation

Installation must follow all of HeatLink's instructions and guidelines.

Related Documents

- HeatLink Limited Plumbing Warranty

Qty	Stk. #	Size	Dimension, in / (mm)						ID1	ID2	Weight, lb / (kg)
			A	B	C	D	E	F			
	18005	½" x ½" PEX	0.71 (18.0)	0.45 (11.5)	0.24 (6.1)	0.24 (6.1)	0.45 (11.5)	0.71 (18.0)	0.31 (8.0)	0.31 (8.0)	0.022 (0.010)
	18225	¾" x ½" PEX	0.71 (18.0)	0.45 (11.5)	0.24 (6.1)	0.33 (8.5)	0.57 (14.5)	0.63 (16.0)	0.46 (11.7)	0.31 (8.0)	0.015 (0.007)
	18022	¾" x ¾" PEX	0.71 (18.0)	0.55 (14.0)	0.33 (8.5)	0.33 (8.5)	0.55 (14.0)	0.71 (18.0)	0.46 (11.7)	0.46 (11.7)	0.021 (0.009)
	18028	1" x 1" PEX	0.85 (21.7)	0.67 (17.1)	0.47 (12.0)	0.47 (12.0)	0.67 (17.1)	0.85 (21.7)	0.61 (15.5)	0.61 (15.5)	0.044 (0.020)

This page is intentionally blank.