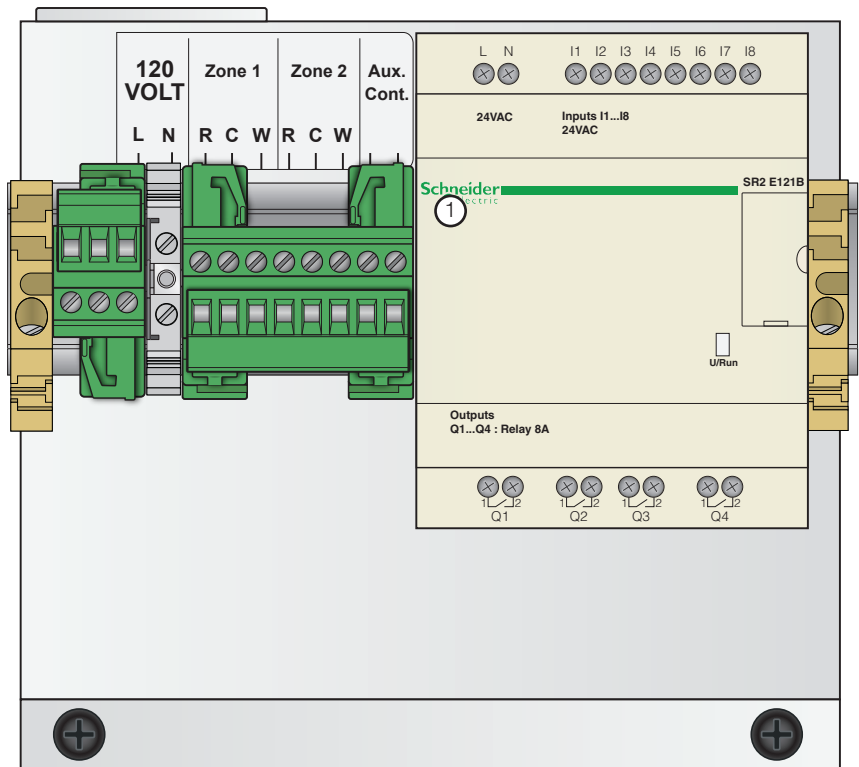
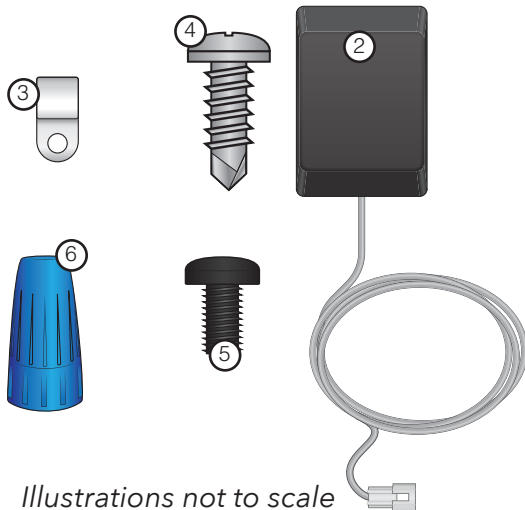


Included in PLC Replacement Kit

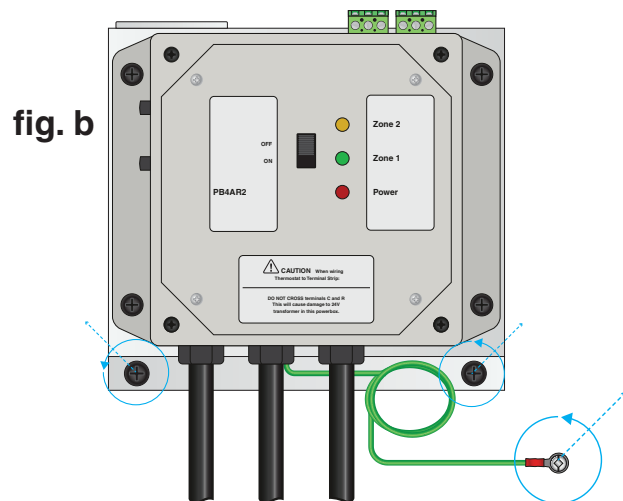
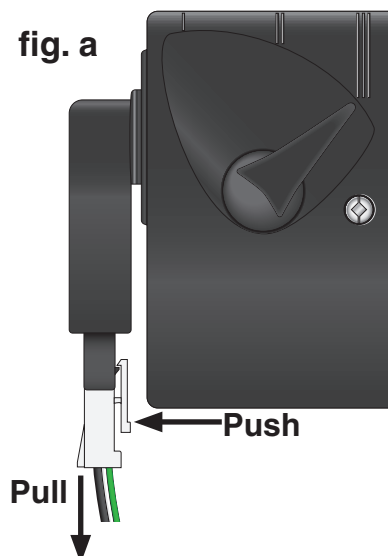
1. PLC Control (with bracket)
2. 24V Adapter
3. Nylon Cable Clamp Strain Relief
4. Self-Tapping Screw
5. Black Mounting Screws x2
6. Marettes x6



PLC Control shown without wiring - may not be exactly as shown

1. Remove Power Box

- Disconnect the 120V power supply to the HeatLink Panel
- For panels with Molex Connections on the pumps, simply disconnect the connectors as shown in fig. a.
- For panels that have pumps hardwired to the Power Box, cut the wires at the pump leaving a minimum of 2 inches to allow for stripping and connection to the PLC pump wiring (using included marettes).
- Remove main ground wire (green single conductor) from panel back plate. Keep ground screw. (fig. b).



- Remove 2 black screws securing power box bracket to back plate. Keep screws. (fig. b)
- Lift the bottom of the bracket up to roughly a 45° angle to slide the tab from the slot in the backplate (fig. c).

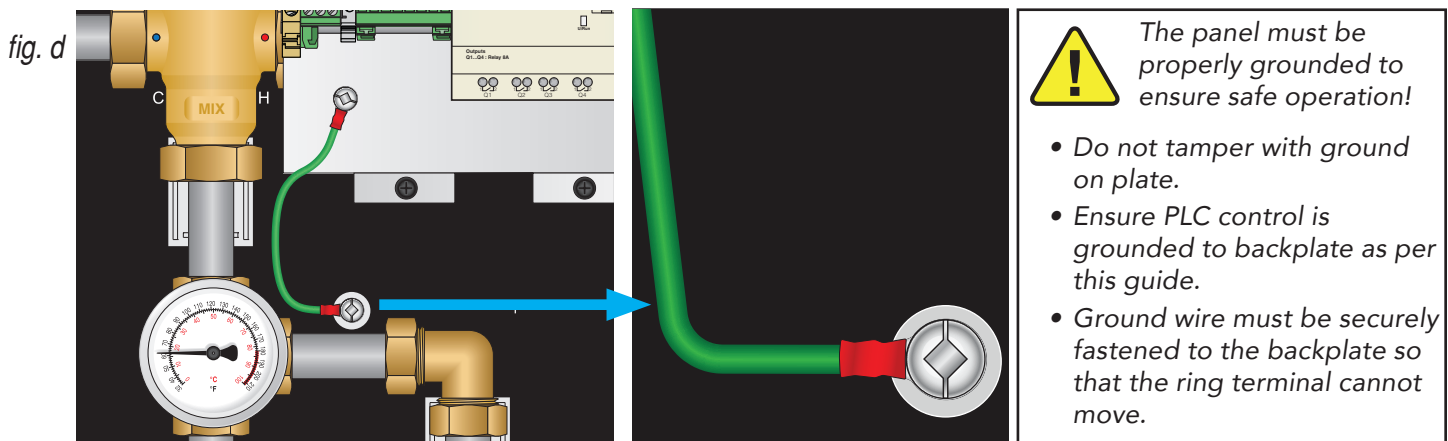


2. Install PLC Control

- Hold the bracket at a 45° angle and insert the tab into the slot, then let it rest against the back plate and secure it with the two black screws.

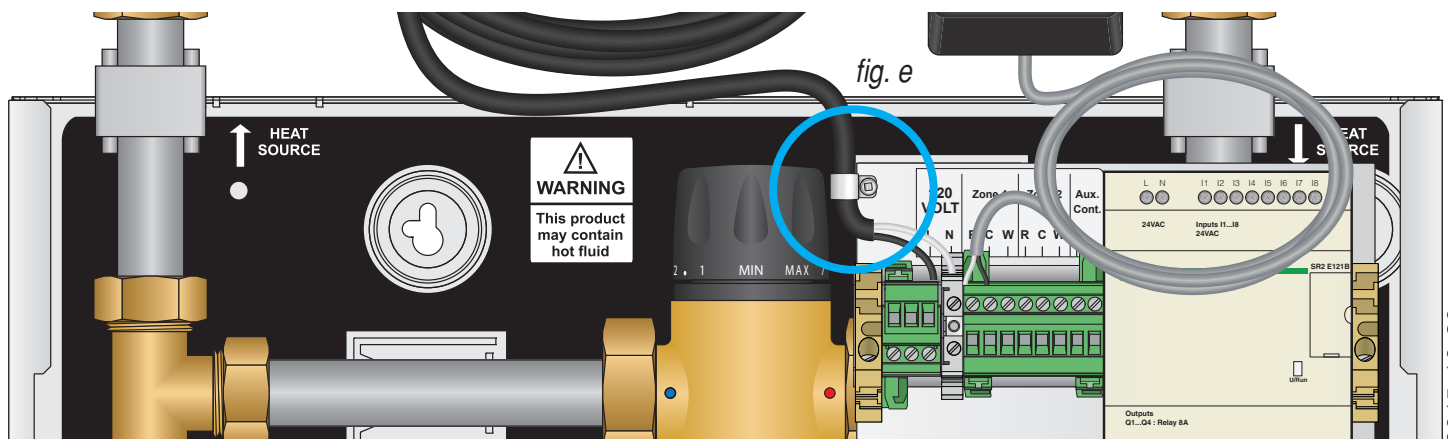
3. Ground PLC Control

- Attach the ground wire (from plate) to the vacant ground hole using saved ground screw (fig. d).



4. Connections

- Connect the pump wires (as labelled) to the proper pumps using the Molex connectors, or cut the Molex connector off of the PLC pump wires and use the included Marettes to wire the PLC pump wires to the corresponding pumps.
- Use the supplied nylon cable clamp strain relief and self-tapping screw to secure the 120V cable to the back plate or bracket (fig. e - suggested location).



5. Wiring

You will need to consult the power box wiring diagram, and/or the attached PLC wiring diagram.

- Connect the thermostat wires to the R C & W terminals (fig. f).
- Connect auxiliary wires to the auxiliary terminals.
- Plug in the main power and 24V transformer.
- The green LED on the PLC will light, indicating that the panel is working properly.

fig. f

