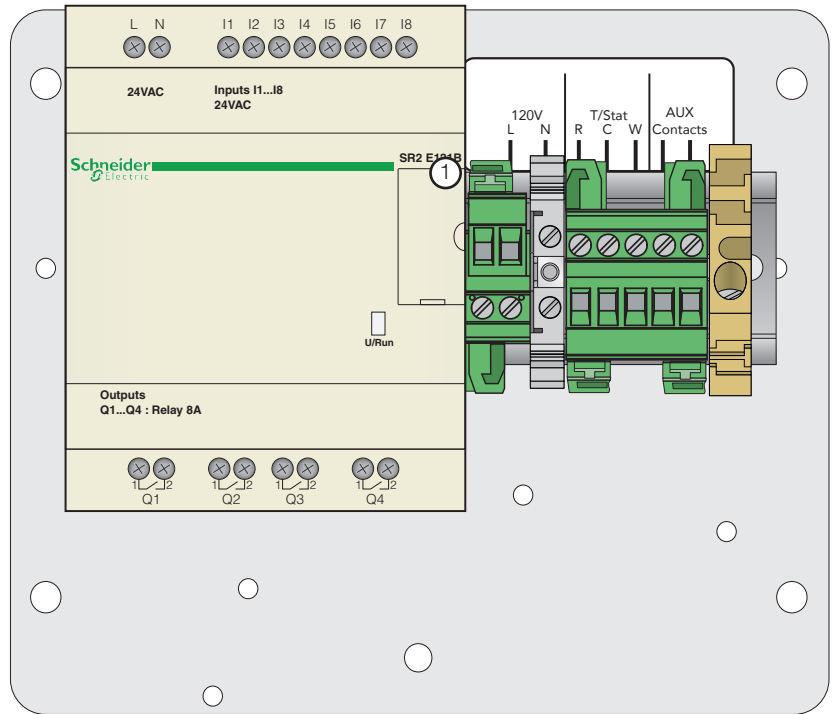
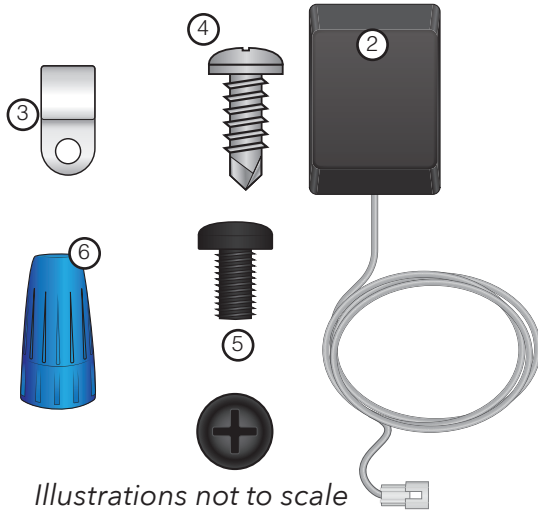


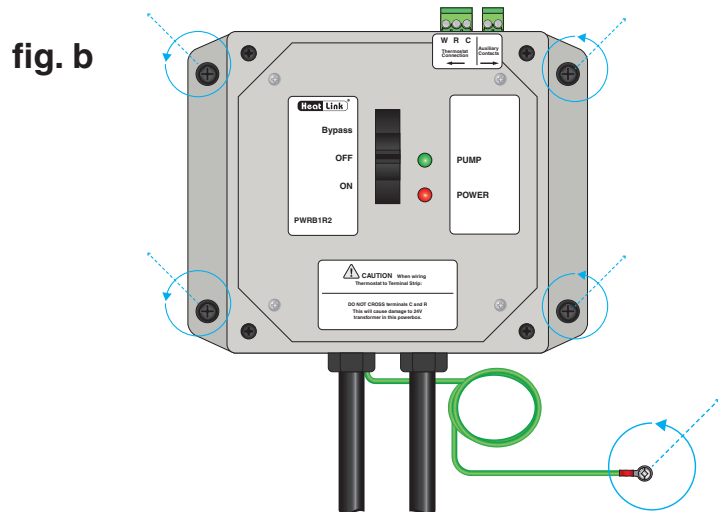
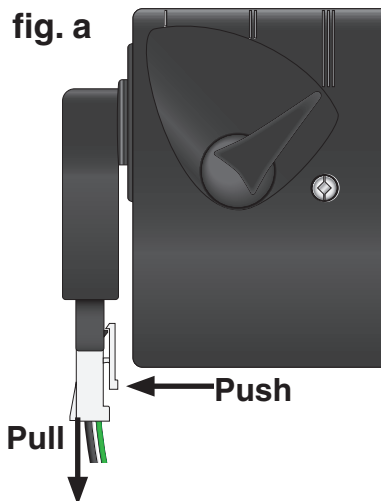
## Included in PLC Replacement Kit

1. PLC Control (with bracket)
2. 24V Adapter
3. Nylon Cable Clamp Strain Relief
4. Self-Tapping Screw
5. Black Mounting Screws x2
6. Marettes x3



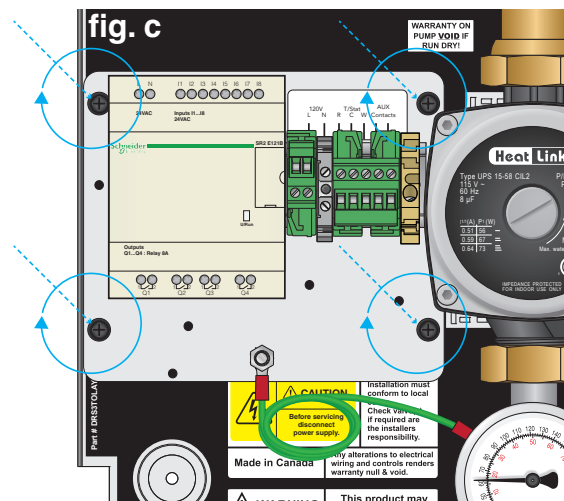
## 1. Remove Power Box

- Disconnect the 120V power supply to the HeatLink Panel
- For panels with Molex Connections on the pumps, simply disconnect the connectors as shown in fig. a.
- For panels that have pumps hardwired to the Power Box, cut the wires at the pump leaving a minimum of 2 inches to allow for stripping and connection to the PLC pump wiring (using included marettes).
- Remove main ground wire (green single conductor) from panel back plate. Keep ground screw. (fig. b).
- Remove 4 black screws securing power box to back plate. Keep screws. (fig. b)



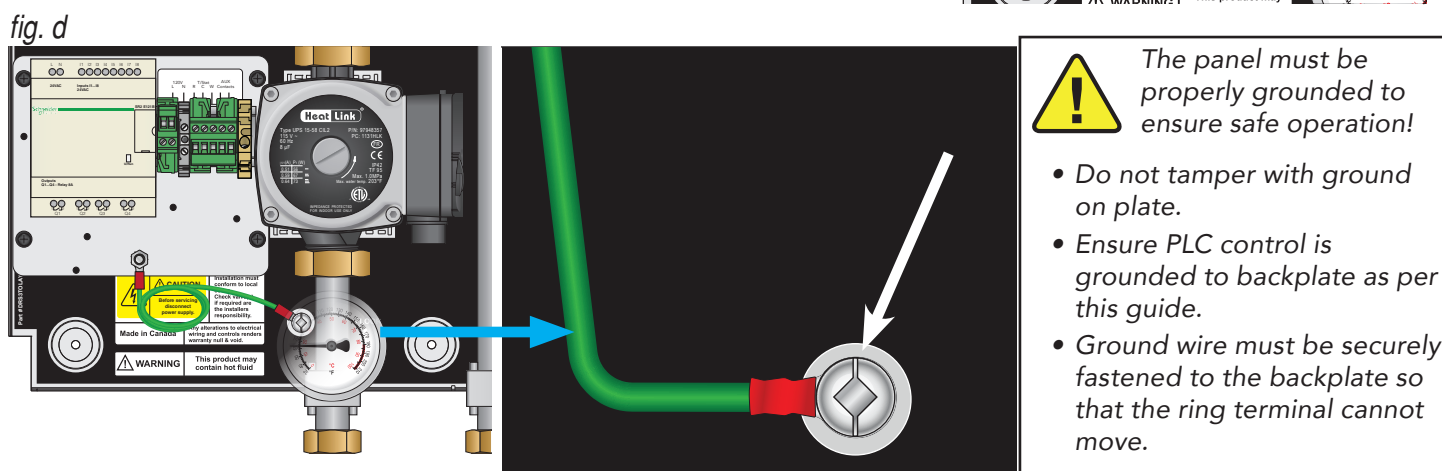
## 2. Install PLC Control

- Install PLC wiring harness on the backplate using screws and mounting holes from the power box. (fig. c)



## 3. Ground PLC Control

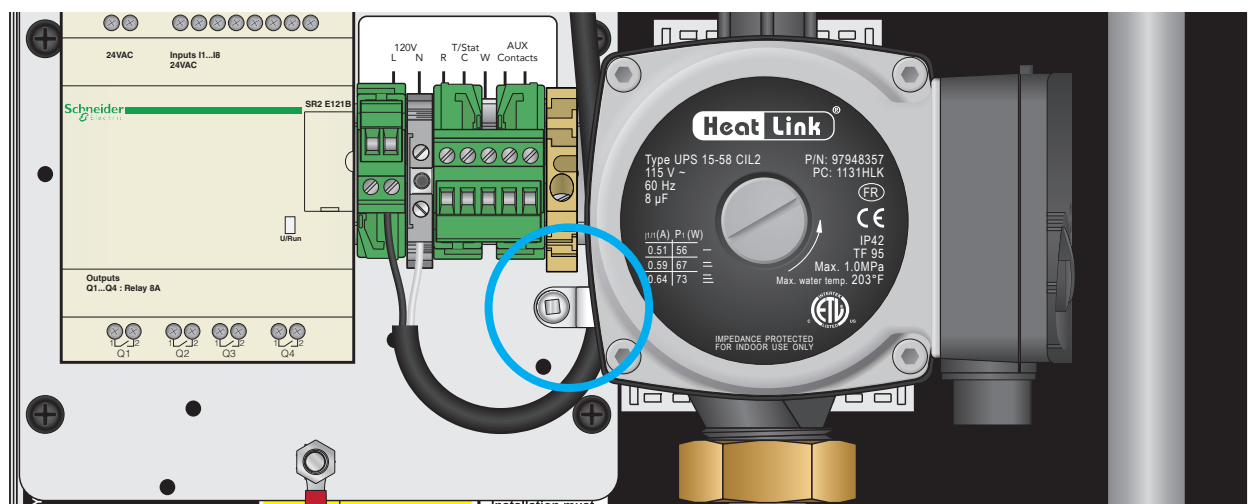
- Attach the ground wire (from plate) to the vacant ground hole using the saved ground screw. (fig. d)



## 4. Connections

- Use the supplied nylon cable clamp strain relief and self-tapping screw to secure the 120V cable to the back plate (fig. d).

fig. e



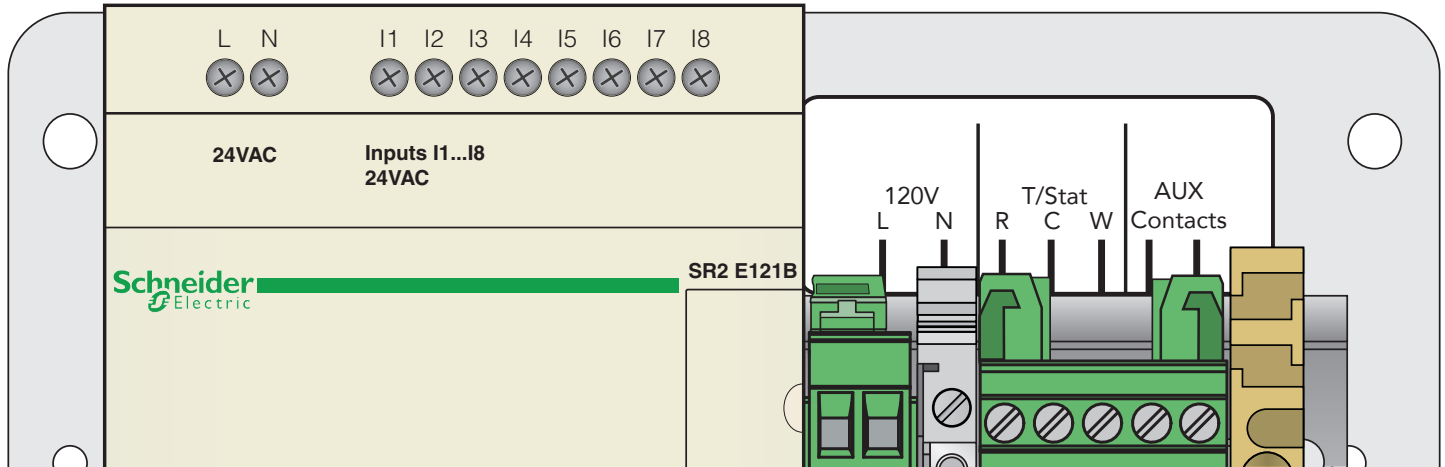
- Connect the primary pump wire (as labelled) to the pump.

## 5. Wiring

You will need to consult the power box wiring diagram, and/or the attached PLC wiring diagram.

- Connect the thermostat wires to the R C & W terminals (fig. e).
- Connect auxiliary wires to the auxiliary terminals.
- Plug in the main power and 24V transformer - the panel is now ready to run.

fig. f



PLC may not be exactly as shown

