

46801 Wireless Digital Thermostat



Installer/User Manual

HeatLink Group, Inc.
www.heatlink.com

L646801 Wireless Digital Thermostat Instructions_2021

Printed in China
January 14, 2021

Product Compliance

This equipment has been tested and found to comply with the limits for a Class B digital device, pursuant to Part 15 of the FCC Rules. These limits are designed to provide reasonable protection against harmful interference in a residential installation. This equipment generates uses and can radiate radio frequency energy and, if not installed and used in accordance with the instructions, may cause harmful interference to radio communications. However, there is no guarantee that interference will not occur in a particular installation. If this equipment does cause harmful interference to radio or television reception, which can be determined by turning the equipment off and on, the user is encouraged to try to correct the interference by one or more of the following measures:

- Reorient or relocate the receiving antenna.
- Increase the separation between the equipment and receiver.
- Connect the equipment into an outlet on a circuit different from that to which the receiver is connected.
- Consult the dealer or an experienced radio/TV technician for help.

Changes or modifications not expressly approved by the party responsible for compliance could void the user's authority to operate the equipment.

This device complies with part 15 of the FCC Rules. Operation is subject to the following two conditions: (1) This device may not cause harmful interference, and (2) this device must accept any interference received, including interference that may cause undesired operation.

This device complies with Industry Canada's licence-exempt RSSs. Operation is subject to the following two conditions:

- (1) This device may not cause interference; and
- (2) This device must accept any interference, including interference that may cause undesired operation of the device.

Le présent appareil est conforme aux CNR d'Industrie Canada applicables aux appareils radio exempts de licence. L'exploitation est autorisée aux deux conditions suivantes :

- (1) l'appareil ne doit pas produire de brouillage, et
- (2) l'utilisateur de l'appareil doit accepter tout brouillage radioélectrique subi, même si le brouillage est susceptible d'en compromettre le fonctionnement.

Overview

The HeatLink® 46801 Wireless Thermostat has an easy to use interface, and a sleek modern design. It must be used with the 43301 Wireless Internet Gateway (sold separately) and can be configured to work with a variety of radiant heating systems.

The HeatLink® Smart System can be configured with an internet connection (Online), or without (Offline). The free HeatLink® App must be downloaded to your Apple or Android device for use with your Online Smart System.



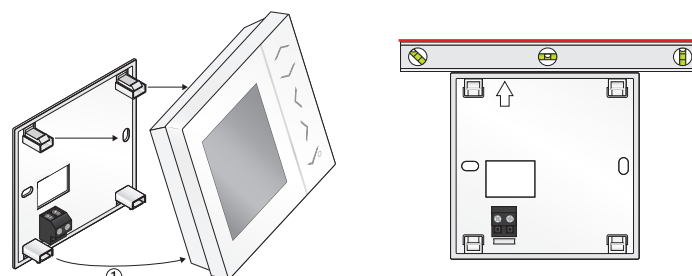
In order to use the app you must first create a profile. Follow the in app instructions to set up your profile.

Apple, the Apple logo, iPhone, and iPod touch are trademarks of Apple Inc., registered in the U.S. and other countries. App Store is a service mark of Apple Inc., registered in the U.S. and other countries.

Google Play and the Google Play logo are trademarks of Google LLC.

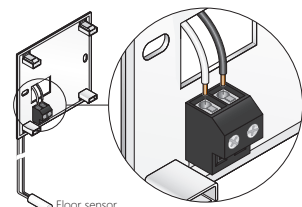
Note: To manually change parameters/settings when configured as an Online system, the Gateway must be powered off (unplugged).

Installation

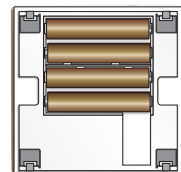


Remove the back mounting plate by pulling from the bottom, and out.

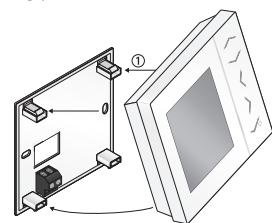
Attach the mounting plate to the desired spot on the wall using the included screws, ensuring it is level.



If using a floor sensor (sold separately, 10K RTD only) wire it into the terminal block on the mounting plate.

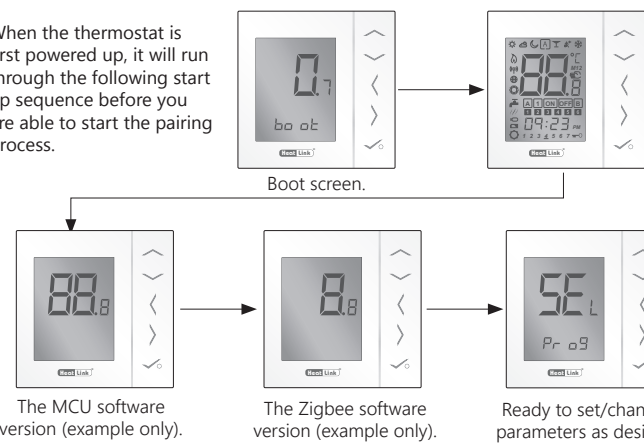


Place the 4 x AAA alkaline batteries into the thermostat.



Replace the thermostat onto the backplate, hinging from the top.

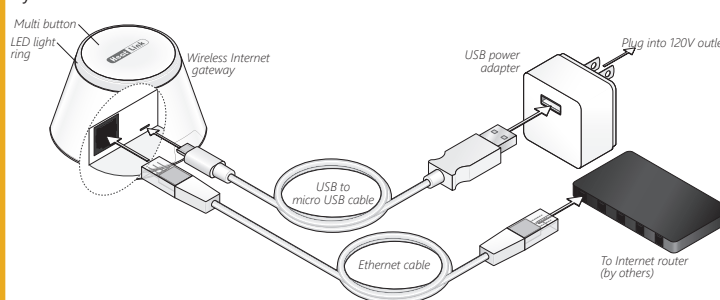
When the thermostat is first powered up, it will run through the following start up sequence before you are able to start the pairing process.



Installation - Gateway

When installing the wireless gateway, attach all non-power cords before powering up.

For further instructions see the instructions included with the gateway, or the L3715 Smart System Installation Manual.



System Components

Additional components may be necessary to operate your HeatLink® Smart System. For details on component operation and installation, see the individual user guides, or the L3715 Smart System Installation Manual.

The 43301 Wireless Internet Gateway (sold separately) is needed for all HeatLink® Smart Systems to function.

The 43302 Wireless Relay can be configured as a Boiler Relay (RX1), or Standalone Relay (RX2) depending on your system configuration.

The 40328 StatLink® 8 Zone Wireless Module connects your wireless thermostats to the zone actuators, boiler, system pump, etc.

The 56401 Wireless Valve Actuator is easily installed on a radiator valve to supply even heat to a room. Can be used in Online or Offline systems.

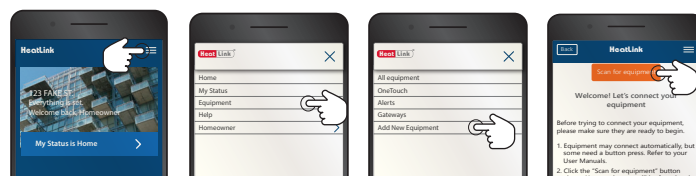
The 43303 Door/Window Sensor requires an Online system to operate, and allows you monitor your home windows and doors, as well as set custom programs for system operation (using the app).

The 43304 Smart Plug requires an Online system to operate, and allows you to control the on/off function of lights and some electronics, and set custom programs for system operation (using the app).

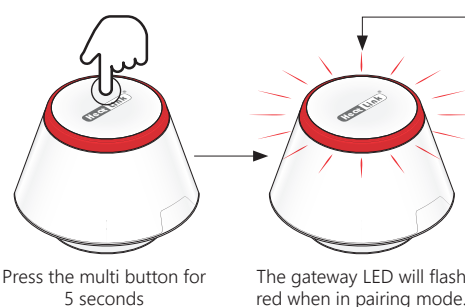
Pair Mode

In order to add devices to your system, the Gateway must be put into Pair Mode. The steps are slightly different for Online and Offline systems - ensure that you follow the instructions below. For device specific pairing instructions, see the appropriate instruction sheet, or the L3715 Smart System Installation Manual, available on www.heatlink.com

Online



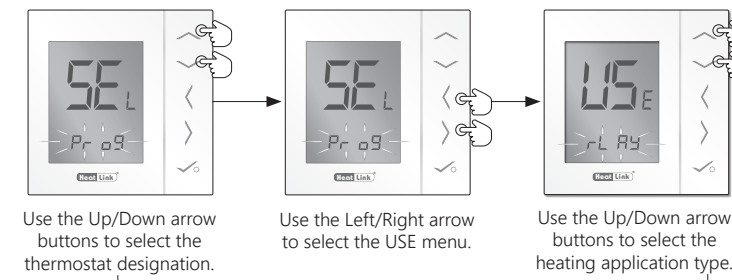
Offline



Once the Gateway is in Pair Mode proceed to the device pairing section.

Setting the System Parameters

The HeatLink Wireless Digital Thermostat can be programmed for a variety of different heating applications. The factory default is Underfloor Heating (UFH). Follow the steps below to change the parameters for your system needs.



Use the Up/Down arrow buttons to select the thermostat designation.

Use the Left/Right arrow to select the USE menu.

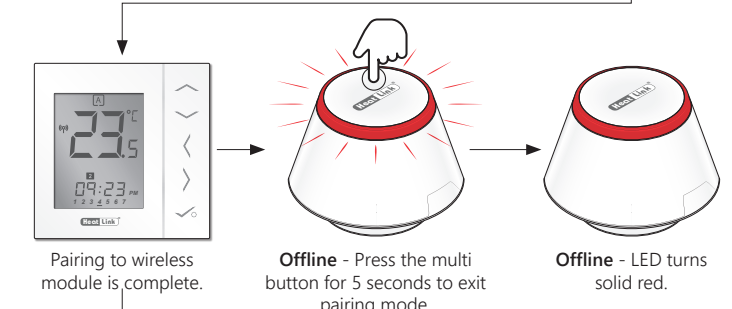
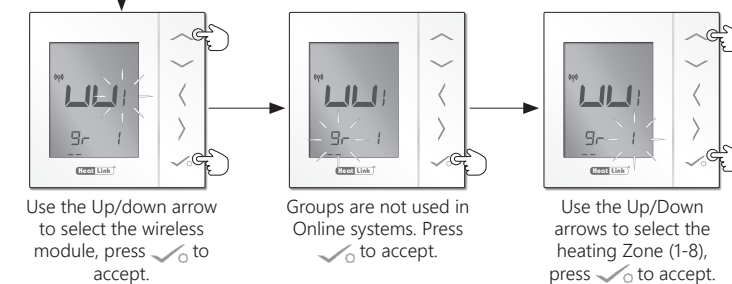
Use the Up/Down arrow buttons to select the heating application type.

- Pr o9 Programmable (master) thermostat
- nPr9 Non-programmable (slave) thermostat
- uu tr Hot Water Timer (not used)
- rL RY Underfloor Heating (default) StatLink® 8 Zone Wireless Module.
- rAd Radiator System Wireless Valve Actuator.
- rEC1 Boiler Switching Wireless Relay (RX1 setting).
- rEC2 Single Room Switching Wireless Relay (RX2 setting).

Note: Ensure that your thermostat(s) are paired to the proper component(s) for the system type installed.

Underfloor Heating System Set Up

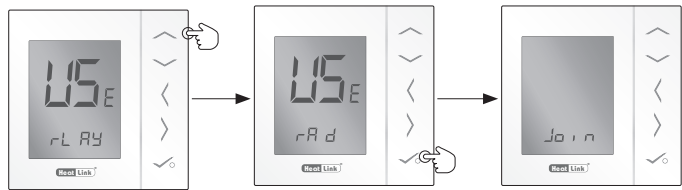
Follow the Pairing Mode instructions, then continue as per below.



Note: If you select a zone that has a thermostat already assigned to it, the new thermostat will replace it, and the first thermostat will automatically factory reset.

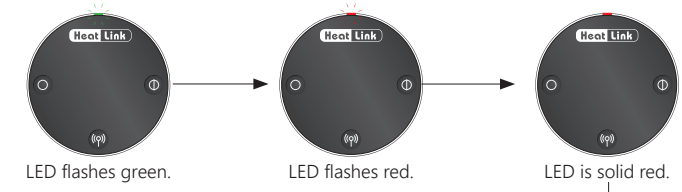
Radiator/Baseboard System Set Up

Follow the Pairing Mode instructions, then continue as per below.

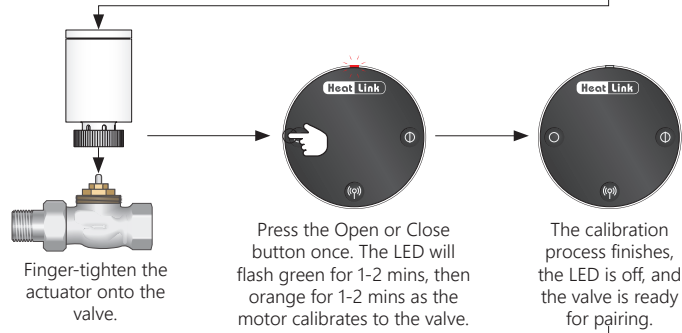


Use the Up arrow to select rAd. Press ✓ to accept. Waiting for the gateway.

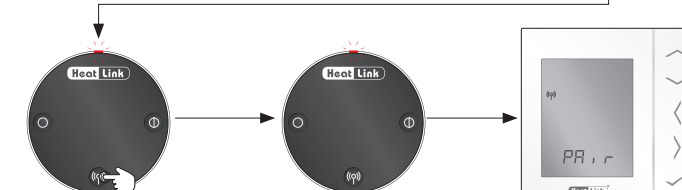
Install the two included AA batteries into the wireless valve actuator. The actuator will go through the startup process, lasting approx. 1-2 minutes.



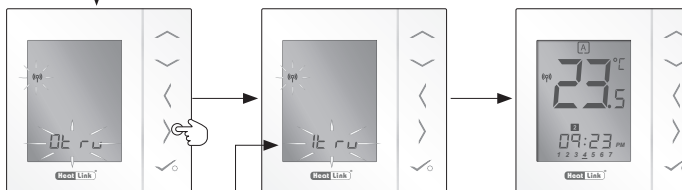
LED flashes green. LED flashes red. LED is solid red.



Finger-tighten the actuator onto the valve. Press the Open or Close button once. The LED will flash green for 1-2 mins, then orange for 1-2 mins as the motor calibrates to the valve. The calibration process finishes, the LED is off, and the valve is ready for pairing.



Hold the pair button for 10 seconds. Only one actuator can be in pair mode at a time. The LED will flash red. The thermostat is recognized by the Zigbee network. Press ✓ to accept.



Press the right arrow. The icons will flash as the thermostat pairs with the actuator. The prefix number will change as each actuator is paired. Once all actuators have paired,* press ✓ to accept. Pairing to the wireless valve actuator(s) is now complete.



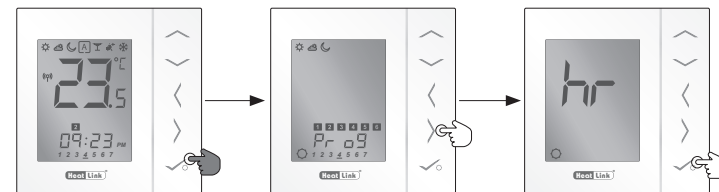
Offline - Press the multi button for 5 seconds to exit pairing mode. Offline - LED turns solid red. Online - LED turns solid blue.

*Note: Each thermostat can be paired with up to six (6) wireless valve actuators. Once the maximum number is reached the thermostat will automatically exit the pairing screen and return to the main user screen.

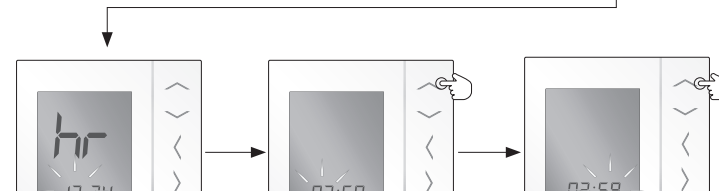
Setting the Time & Date (Offline Only)

Note: When setting up multiple thermostats, once all thermostats are paired, setting the time and date on one device will populate the time and date on all others.

Other settings, such as clock format, °C or °F, and heating settings still need to be set individually on each thermostat.



Hold ✓ button for 3 seconds. Press the Right arrow to select hr. Press ✓ to accept.



Use the Right/Left arrows to select either the 12 or 24 hour clock. Press ✓ to accept. Use the Up/Down arrows to select the hour. Press ✓ to accept. Use the Up/Down arrows to select the minute. Press ✓ to accept.



Use the Up/Down arrows to select the year. Press ✓ to accept. Use the Up/Down arrows to select the month. Press ✓ to accept. Use the Up/Down arrows to select the day. Press ✓ to accept.

Setting Mode Temperatures (Offline Only)

The HeatLink wireless thermostat includes several different preprogrammed heating modes that can be customized to suit your heating needs.

Icon	Function
	Indicates active heating mode.
	Sun: high comfortable temperature
	Cloudy: middle comfortable temperature
	Moon: low comfortable temperature
	Programmable thermostat Program mode (Auto) indicator. Indicates program is running, Auto On or Auto Off.



Use Left arrow to select Low Temp. Low Temp (moon) selected. Use Up arrow to change temperature.

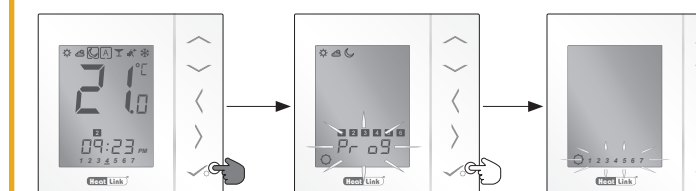


Press ✓ to accept. Repeat for other modes. Use Left arrow to move back to A.

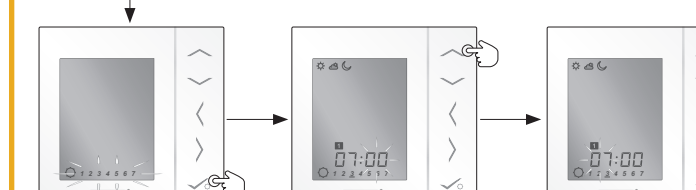
Setting Heating Schedules (Offline Only)

The HeatLink® Wireless Programmable Thermostat is factory programmed with a default 5/2 heating schedule (see below for details). Use the following steps to set up your custom heating programs.

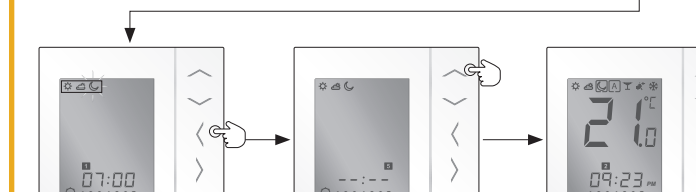
Icon	Type	Description
	5/2	Program separate heating schedules for weekdays, and the weekend.
	7 days	Program a single heating schedule for all days of the week.
	Daily	Program individual heating schedules for each day of the week.



Press and hold the ✓ button for 5 seconds. Press the ✓ button to select "Prog". Use the Left/Right arrow buttons to select program schedule.



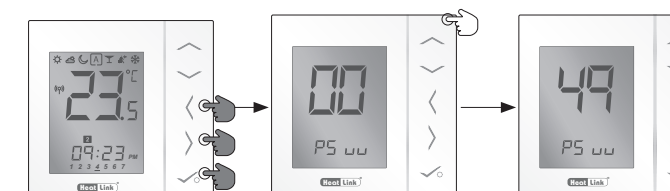
Press ✓ to confirm. Use the Up/Down arrows to select the start hour. Press ✓ to confirm. Use the Up/Down arrows to select the start minute. Press ✓ to confirm.



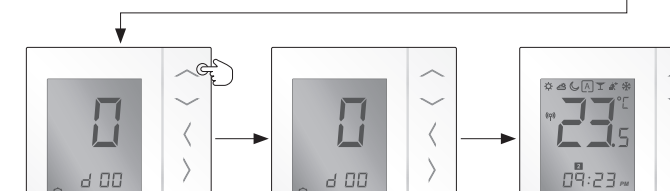
Use the Left/Right arrows to select the desired heating mode. Press ✓ to confirm. Repeat for all programs. Set the time to add extra program blocks as needed (6 total), or remove blocks by setting time to "--:--". Press ✓ to accept.

Setting °C or °F

Change the temperature format using the following steps. Note: To manually change parameters/settings when configured as an Online system, the Gateway must be powered off (unplugged).



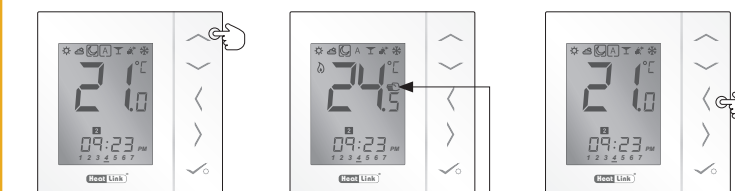
Hold buttons for 3 seconds. Use the Up arrow to select menu 49. Press ✓ 5 times to reach the d00 screen.



Use the Up/Down arrow to select 0 for °C or 1 for °F. Accept by pressing ✓ to return to the main screen.

Manual Set Point Temperature Override

The temperature set point can be manually overridden at any time in either an Online or Offline system.

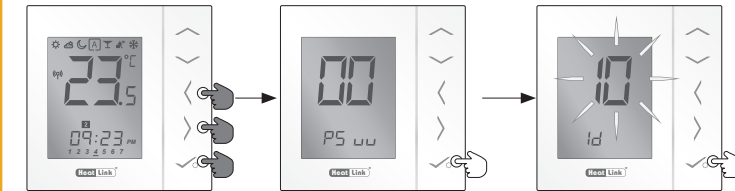


Use Up/Down arrows to adjust temperature. Press ✓ to accept. Heat source will turn on, and the manual override icon will appear. To return to the current heating program, press the left arrow once.

ID Mode

ID mode can be used to identify the devices connected to your system during pairing, troubleshooting, or maintenance, and can be accessed from any device in either an Online or Offline system, or also from the app in an Online system.

Offline/Online



Press buttons for 3 seconds to enter menu. Press ✓ to enter ID mode. All paired devices will flash their LEDs. Devices will stay in ID mode for 10 minutes, or until exited by pressing the ✓ button once.

Online



Select the device you want to ID. Tap the name of the device. Tap the identify icon. The device will start flashing. Tap again to exit ID mode.

Reset Thermostats

This process will reset the thermostat to the factory defaults.



Hold buttons for 3 seconds. Use the Up arrow to select menu 47. Press ✓ to delete thermostat from the network.



Press ✓ to reset the thermostat. Thermostat start up sequence. The thermostat is now ready to pair.