



SMART SYSTEM

### 43301 Wireless Internet Gateway



Installer/User Manual

HeatLink Group, Inc.  
www.heatlink.com

Printed in Canada  
July 11, 2018

L643301 Wireless Gateway instructions

#### Product Compliance

This equipment has been tested and found to comply with the limits for a Class B digital device, pursuant to Part 15 of the FCC Rules. These limits are designed to provide reasonable protection against harmful interference in a residential installation. This equipment generates uses and can radiate radio frequency energy and, if not installed and used in accordance with the instructions, may cause harmful interference to radio communications. However, there is no guarantee that interference will not occur in a particular installation. If this equipment does cause harmful interference to radio or television reception, which can be determined by turning the equipment off and on, the user is encouraged to try to correct the interference by one or more of the following measures:

- Reorient or relocate the receiving antenna.
  - Increase the separation between the equipment and receiver.
  - Connect the equipment into an outlet on a circuit different from that to which the receiver is connected.
  - Consult the dealer or an experienced radio/TV technician for help.
- Changes or modifications not expressly approved by the party responsible for compliance could void the user's authority to operate the equipment.

This device complies with part 15 of the FCC Rules. Operation is subject to the following two conditions: (1) This device may not cause harmful interference, and (2) this device must accept any interference received, including interference that may cause undesired operation.

This device complies with Industry Canada's licence-exempt RSSs. Operation is subject to the following two conditions:

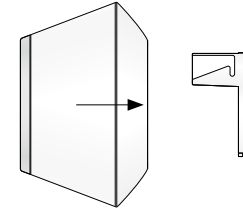
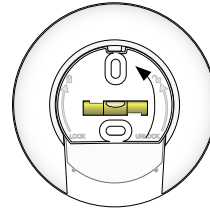
- (1) This device may not cause interference; and
- (2) This device must accept any interference, including interference that may cause undesired operation of the device.

Le présent appareil est conforme aux CNR d'Industrie Canada applicables aux appareils radio exempts de licence. L'exploitation est autorisée aux deux conditions suivantes :

- (1) l'appareil ne doit pas produire de brouillage, et
- (2) l'utilisateur de l'appareil doit accepter tout brouillage radioélectrique subi, même si le brouillage est susceptible d'en compromettre le fonctionnement.

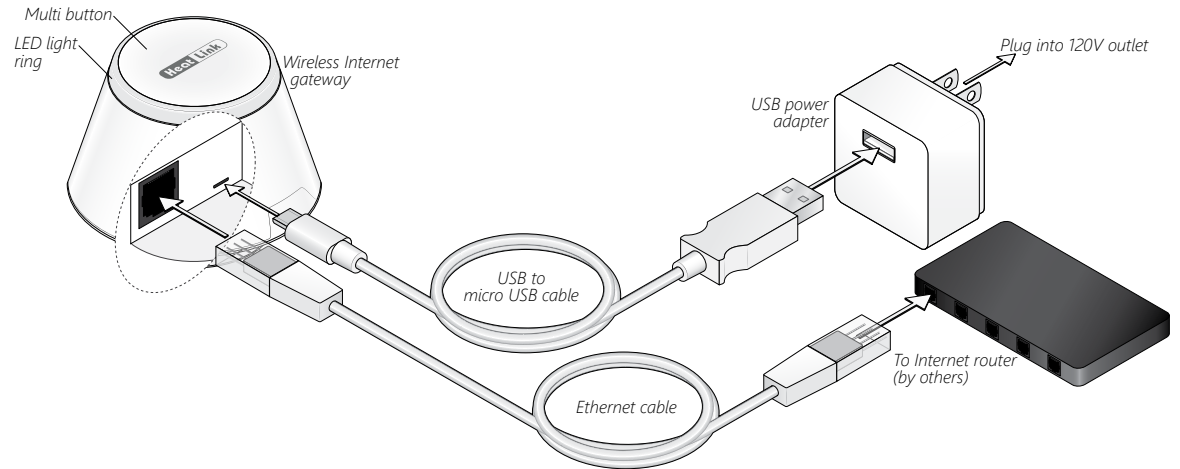
#### Gateway Installation

**Step 1** Remove the port cover from the bottom of the Wireless Internet Gateway by twisting it ~¼ turn counter-clockwise.



**Step 2** If connecting to the Internet and app, attach the Ethernet network cable to the gateway, then to your router.

**Step 3** Plug micro USB into the gateway, then plug the USB into the plug adapter.



**Step 4** Plug the adapter into the wall.

**Step 5** If desired, mount the port cover to a wall or other surface. Replace the port cover.

#### Overview

The Wireless Internet Gateway is the heart of the HeatLink Smart System, connecting the system devices using the Zigbee HA protocol, and connecting to the internet via an ethernet cable (included) and router (by others).

The HeatLink® Smart System can be configured with an internet connection (Online), or without (Offline). The free HeatLink® App must be downloaded to your Apple or Android device for use with your Online Smart System.



In order to use the app you must first create a profile. Follow the in app instructions to set up your profile.

*Apple, the Apple logo, iPhone, and iPod touch are trademarks of Apple Inc., registered in the U.S. and other countries. App Store is a service mark of Apple Inc., registered in the U.S. and other countries.*

*Google Play and the Google Play logo are trademarks of Google LLC.*

#### Specifications

Operating conditions	32 - 104°F / 0 - 40°C 10 - 90% humidity (non-condensing)
Storage	-14 - 140°F/-10 - 60°C
Protocols Supported	Zigbee HA1.2 Profile Wifi 802.11n
RF Freq.	2.4 GHz
RF Range	400m open field
Input voltage	120VAC ±10%, 60Hz
Size	3.5" × 3.5" × 2.2" / 89mm × 89mm × 56mm

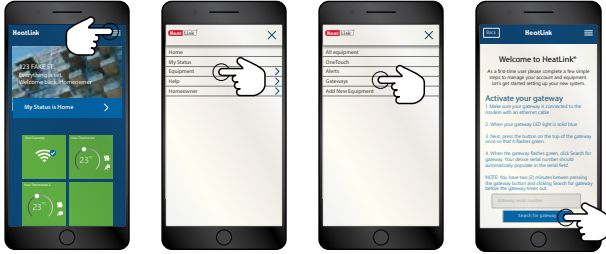
## Pairing

When using the HeatLink® wireless gateway to connect your system pair it with the app before setting up the rest of your components.

The Wireless Internet Gateway and your phone/tablet/computer must be on the same network during the set up/pairing process. Once the set up is complete the app can be used from anywhere to control and monitor the system. See the help section of the app for more details.

**Step 1** Open the app on your phone or tablet, or the portal on your computer.

**Step 2** Scroll down to select Search for Wireless Internet Gateway.



**Step 3** Follow the steps on the app to connect your Wireless Internet Gateway.

**Step 4** On the App click Search for Wireless Internet Gateway. Your device serial number should automatically populate in the serial number field on the app.

**Step 5** Scroll down to enter your location and timezone, address, options, and to name your gateway.

**Step 6** Note: You only have two (2) minutes to set up your gateway before it times out; if it times out you will need to repeat Steps 3-5.

**Step 7** Press Activate Wireless Internet Gateway.

**Step 8** You are now ready to begin pairing other HeatLink wireless components to your StatLink® system.

**Step 9** To add new equipment via the app, open the dropdown menu -> Equipment -> All Equipment -> Add New Equipment

## Wireless Gateway Functions

Function	Press	LED
Enter pairing mode	Press multi button for 5 seconds	Flashes red
Exit pairing mode	Press multi button for 5 seconds	Solid red (offline); solid blue (online)
Enter/exit ID mode	Single press of multi button	Flashes green

## System Components

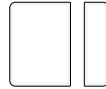
Additional components may be necessary to operate your HeatLink® Smart System. For details on component operation and installation, see the individual user guides, or the L3715 Smart System Installation Manual.

The 43302 Wireless Relay can be configured as a Boiler Relay (RX1), or Standalone Relay (RX2) depending on your system configuration.



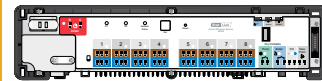
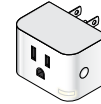
The HeatLink® 46801 Wireless Thermostat has an easy to use interface, and a sleek modern design. It can be configured to work with a variety of radiant heating systems.

The 56401 Wireless Valve Actuator is easily installed on a radiator valve to supply even heat to a room. Can be used in Online or Offline systems.



The 43303 Door/Window Sensor requires an Online system to operate, and allows you monitor your home windows and doors, and set custom programs for system operation (using the app).

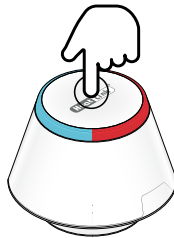
The 43304 Smart Plug requires an Online system to operate, and allows you to control the on/off function of lights and some electronics, and set custom programs for system operation (using the app).



The 40328 StatLink® 8 Zone Wireless Module connects your wireless thermostats to the zone actuators, boiler, system pump, etc.

## ID Mode

ID mode is used to identify the components that are connected to your Smart System; each component will flash for 10 minutes, or until you exit ID mode with another single press of the multi button.



Online or Offline mode - Press the multi button once



Connected devices/LEDs will flash for 10 minutes, or-



Until the multi button is pressed once again to exit.

## Safety Instructions

Read these instructions before installing and using the Gateway, and keep this guide in a safe place for future reference. Verify compatibility with your home system before installation. Follow all instructions provided regarding the addition of devices to your Smart System. An authorized, qualified installer may be required. HeatLink® accepts no responsibility for damage caused by not following these instructions.

## Troubleshooting

### Will not pair with devices initially

- Radio interference is present at the desired location
  - a) Relocate the gateway,
  - b) Select a different location for the device, or
  - c) Add a Zigbee repeater to the system

### Device loss of connection after pairing

- Radio environment may have changed
  - a) Force rejoin to possibly find a better radio path, or
  - b) Apply radio interference solutions as above.

## LED Indications

Solid Blue	On, connected to local router via Ethernet cable, connected to app
Solid Green	Powering up, OR; On, connected to local router via Ethernet cable, <b>not</b> connected to app
Solid Red	On, <b>not</b> connected to internet, <b>not</b> connected to app
Flashing Green	On, attempting to connect, or in <b>Identify</b> mode (with or without network/app connection)
Flashing Red	Ready for device pairing (with or without network/app connection)

## Reset Gateway

If you need to reset your Wireless Internet Gateway to the factory defaults, follow the steps below. Doing this will wipe any devices from your system, and you will have to go through the pairing process again to set up your system from the start.

1. Press and hold the multi button.
2. The LED ring will flash red.
3. Release the multi button when the LED ring turns solid red (~10 seconds).
4. Once the factory defaults are loaded the LED ring will turn solid green.
5. The LED will turn solid red when it is fully reset and ready to be put into pairing mode.

