



Installer/User Manual

HeatLink Group, Inc.
www.heatlink.com

40414 4 Zone Wired Module Instructions

Printed in Canada
June 08, 2023

Overview

The HeatLink® StatLink 40414 4 Zone Wired Module is designed for use with HeatLink 46645 3-wire thermostats to control up to 4 zones, with up to 3 HeatLink actuators connected to each zone terminal. Each zone controls the the associated actuator output terminal.

Jumpers can be used to extend the number of actuators per zone. The module comes with a factory installed fuse for protection. The end switch circuit from the actuators output terminals is ganged though the controller for easy wiring. 24V power from an external transformer of adequate VA is required.

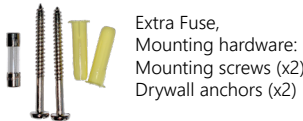
Box Contents



StatLink® 4 Zone Wired Module



Installer/User Manual



Specifications

Indicators	1x Power LED 4x Zone LED
Zones	4
Actuators (per zone)	Up to 3 (max 2 VA each)
Actuators (total)	Up to 12 (24 VA total)
Actuator Terminal Max Draw	1A, 12Vac
Thermostat Terminal Max Draw	40 mA, 24Vac
Recommended 24 VAC Transformer	40 VA
Internal Fuse	5A
Dry Contacts	1
Dimensions	5" x 4.2" x 2.4" (127mm x 107mm x 61mm)

Operation

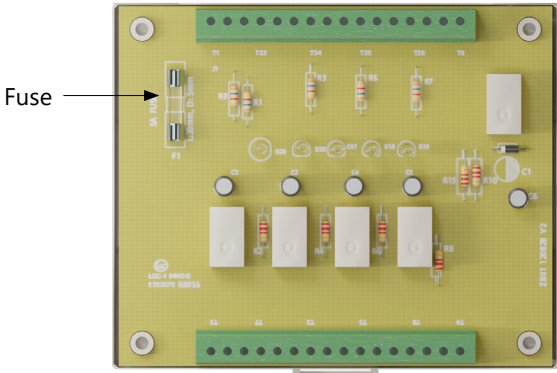
- Step 1** When there is a call for heat from the thermostats, the end switch contacts will close, the boiler will be activated, the pump will start, and the actuators will open.
- Note: This control does not feature a delay circuit. When using a 2-wire actuator, a call for heat will close the end switch contacts immediately. A pressure bypass valve is recommended.*
- When using 4-wire actuators, the module end switch contacts won't close until the actuator end switch closes (actuator open). This will delay pump and boiler activation.*
- Step 2** When the heating requirement has been fulfilled, the end switch will open, the pump will stop and the boiler will shut off, and the actuators will close.

Fuse Replacement

- Step 1** Remove the 40414 from the wall.
- Step 2** Remove the two screws on the back of the unit.
- Step 3** Push on either side of the unit to release the tabs and separate the top from the base.



- Step 4** Replace the fuse.



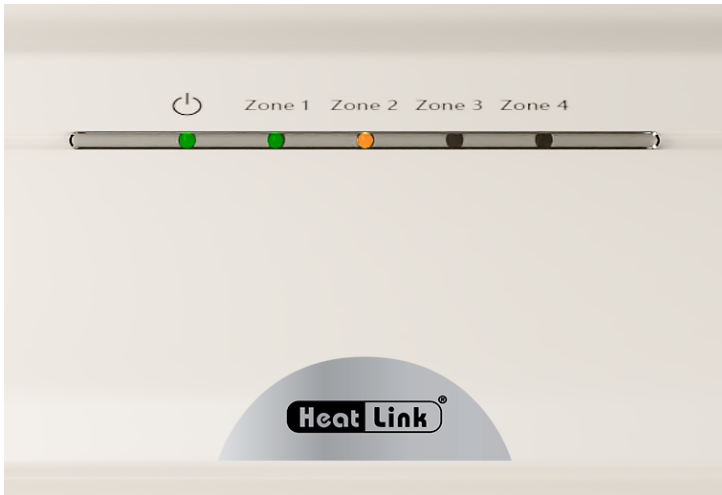
- Step 5** Reassemble the module by inserting the tabs back into place, and installing the two screws on the base.
- Step 6** Re-install the module on the wall or DIN rail.

Installation & Wiring

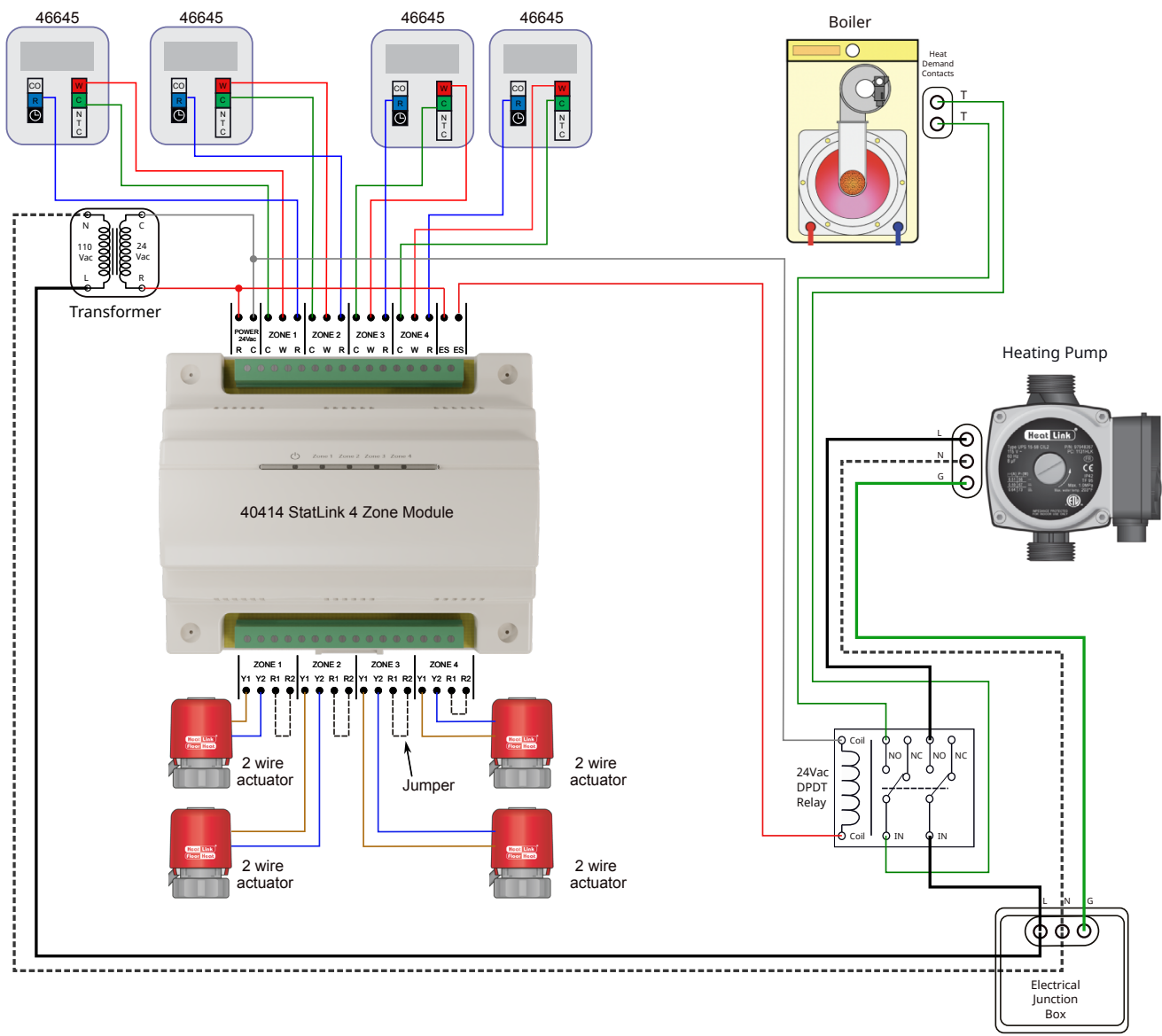
- Step 1** Mount the module using DIN rail, or the included mounting screws and mounting holes.
- Step 2** Wire the thermostat connections as per the wiring diagram, using either 2 or 3-wire thermostats.
- Step 3** Wire the Actuators to the module:
- For 2-wire actuators, up to 3 actuators can be wired to each zone (max. 40mA, 24 VA). A jumper must be installed between the R1 and R2 terminals.
Brown -> Y1
Blue -> Y2
 - For 4-wire (end switch) actuators, only one 4-wire actuator is needed per zone.
Brown -> Y1
Blue -> Y2
Green -> R1
Green -> R2
- Step 4** Wire the boiler and pump relay to the end switch terminals.
- Step 5** After ensuring it is not plugged in, wire the 24V power supply to the 24V terminals.
- Step 6** The 40414 StatLink 4-zone module can be wired in sequence when more than 4 zones are needed (see page 2 for diagram).

LED Indications

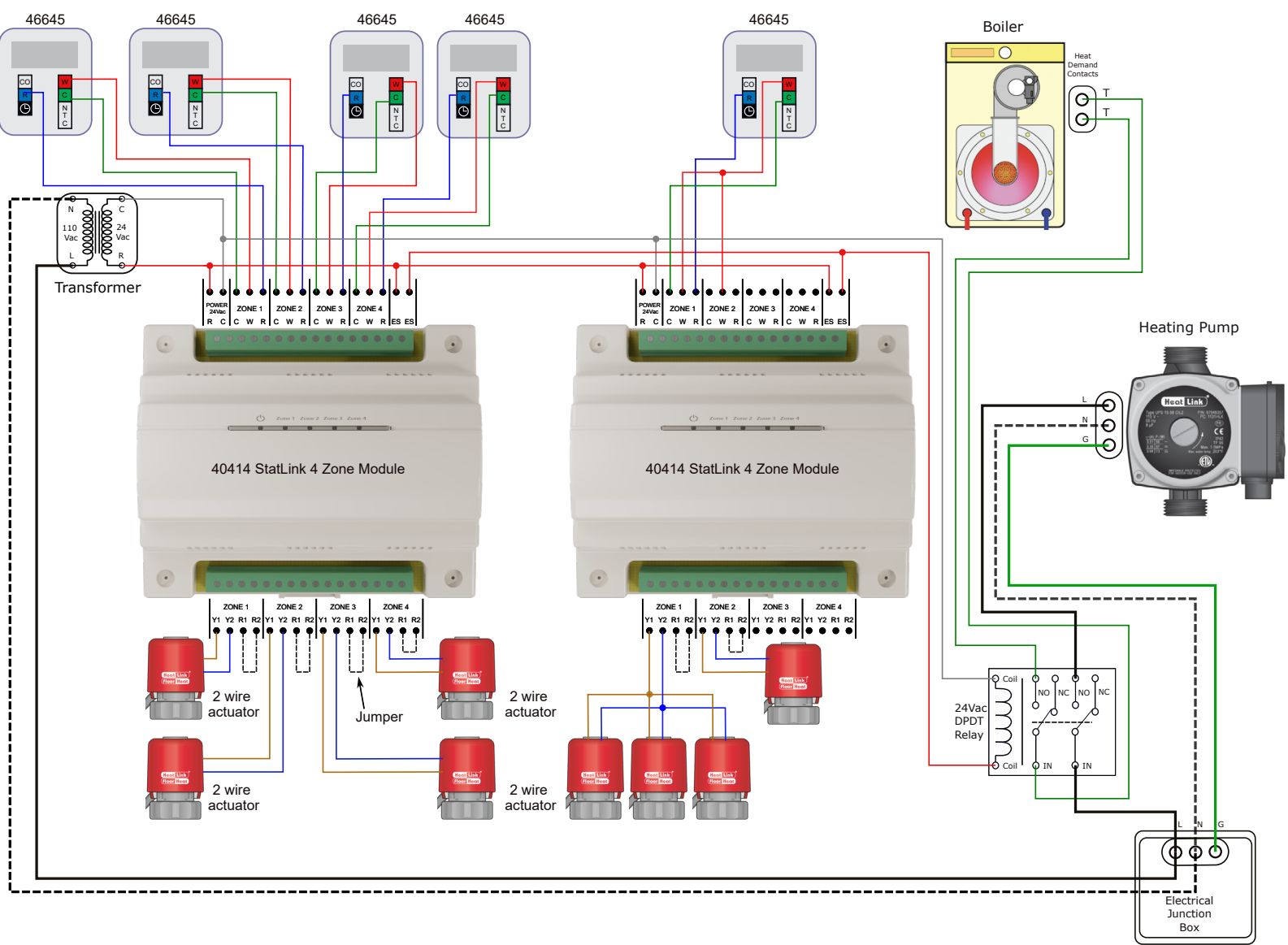
Label	Green LED	Orange LED
Power	Power ON	n/a
Zone 1	Call for Heat	Call for heat + end switch closed
Zone 2		
Zone 3		
Zone 4		



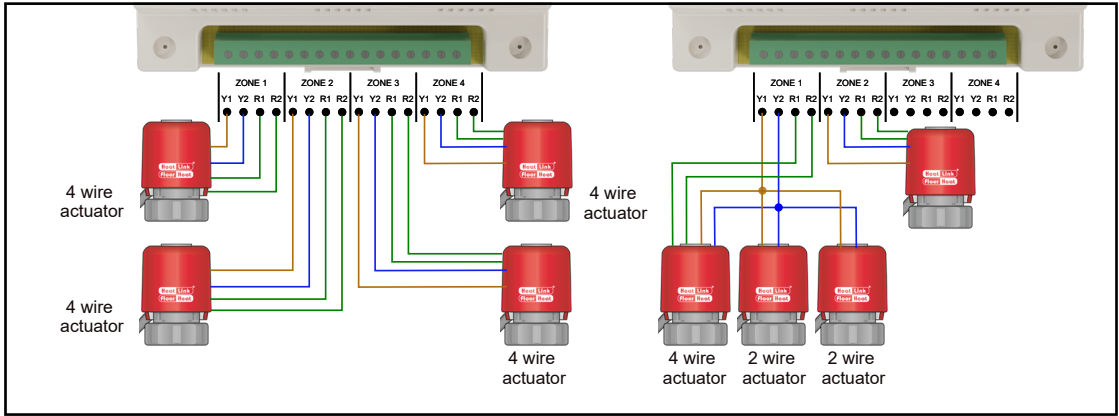
Single Module Configuration (4 zones)



Multiple Module Configuration (8+ zones)



4-Wire Actuator wiring



This product must be installed by a qualified installer/service technician, and must be installed and operated in strict accordance with the terms set out in this manual and in accordance with the relevant requirements of the Local Authority Having Jurisdiction. Failure to comply will result in a void of warranty, and may also result in property damage, serious injury, or death.