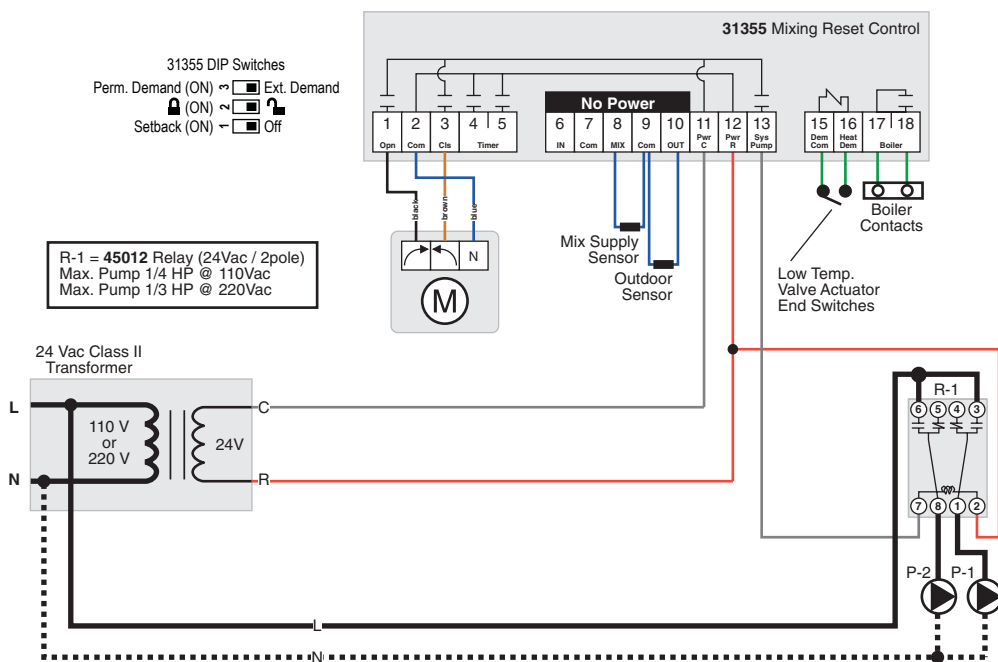
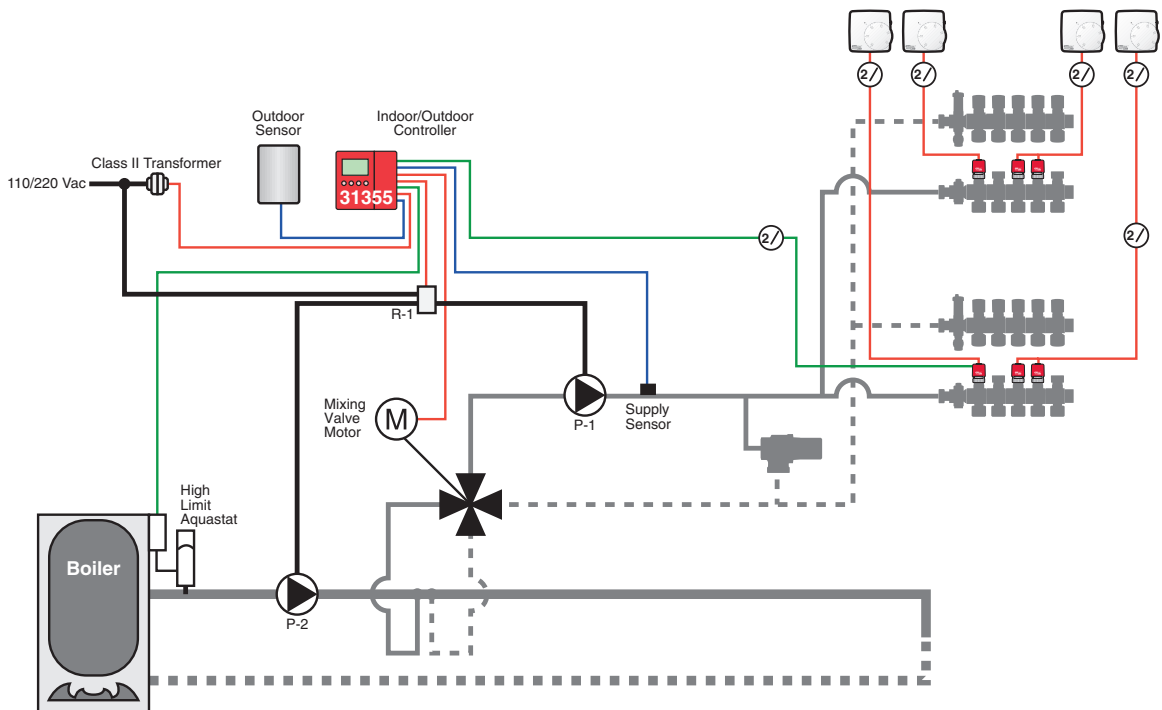


**Application:** Automatic indoor/outdoor controller activating a 4-way mixing valve motor, boiler, plus primary (P-2) and system (P-1) pumps.  
(Optional secondary zone control can be provided with individual room thermostats)



**Note:**

- Drawings are for HeatLink® suggested electrical schematics only! User must determine if electrical schematic will work for their particular application. User must also confirm all HeatLink® schematics with manufacturer schematics of each particular control chosen.
- In all cases manufacturer equipment schematics will take precedence over HeatLink® electrical schematics.
- All wiring as per applicable electrical codes!