

Job or Customer :	
Location :	
Engineer :	
<input type="checkbox"/> Complies with Spec <input type="checkbox"/> Alternate	Notes :
Contractor :	
HeatLink Rep :	
Submitted By :	Date :
Approved By :	Date :
P.O. Number :	Date :

Description

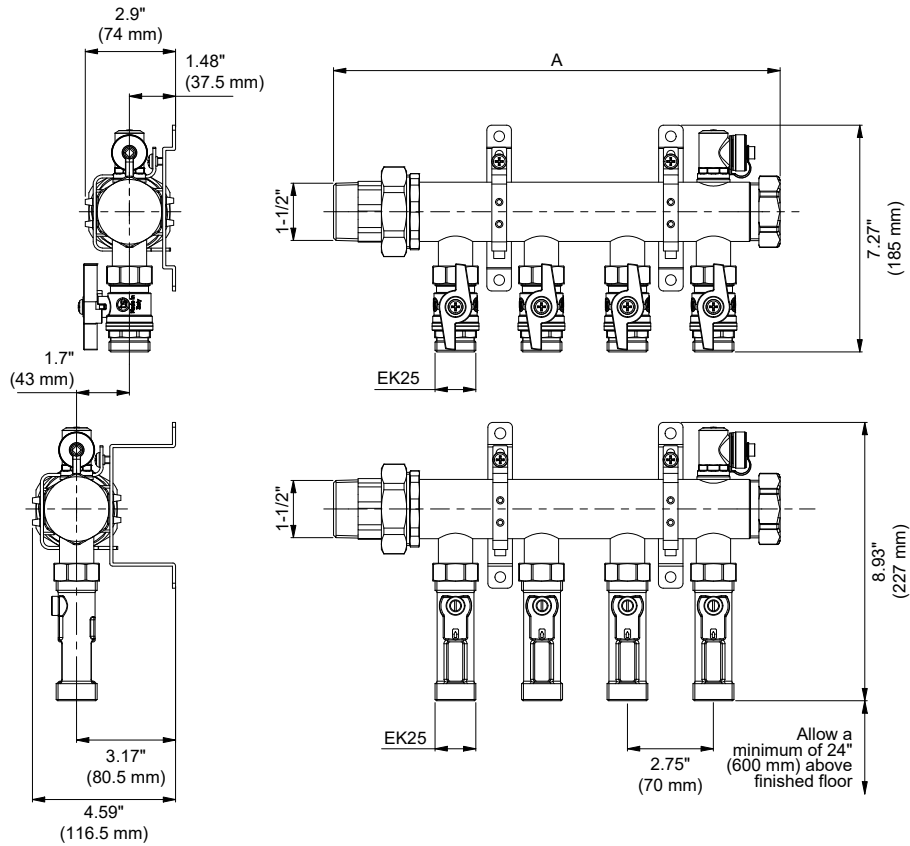
Stainless steel manifold with high flow characteristics for use as a distribution header or snow melt manifold. Comes with two open end manifold unions with gaskets and o-rings, two closed end caps with gaskets, two 1-1/2" manifold bodies, 3/4" full port ball valve with gasket for each supply branch, 0-8 US gpm (0-30 L/min) flow meter with gasket for each return branch, two hose bib/air vents, and two low and two high metal mounting brackets.

PEX to manifold connectors are sold separately.

Qty	Stk. #	# of Loops	Width A, in/(mm)	Weight, lb/(kg)
	76706	6	19-7/8 (504)	24.1 (10.9)
	76708	8	25-3/8 (644)	27.2 (12.3)
	76710	10	30-7/8 (784)	32.2 (14.6)
	76712	12	36-3/8 (924)	37.5 (17)

Technical Data

	Specifications
Material - Body	Stainless Steel AISI 304L (1.4307 EN10088)
Material - Components	ASTM B124 C37700 (CW614N and CW617N)
Material - Brackets	Carbon steel white zinc plated with rubber isolation supports
Max Operating Pressure	145 psi @ 70°F (10 bar @ 21°C)
Max Test Pressure	232 psi @ 70°F (16 bar @ 21°C)
Maximum Trunk Flow Rate	50 US gpm (11.4 m³/h)
Maximum Circuit Flow Rate	5 US gpm (1.1 m³/h)
Min Operating Temperature	36°F (2°C); 0°F (-18°C) with anti-freeze
Max Operating Temperature	212°F (100°C)
Supply Ball Valve	Cv 30 (Kv 26.0)
Return Flow Meter (full open)	Cv 5.78 (Kv 5.0)
Main barrel Flow Coefficient	Cv 29 (Kv 25.1)
Global Flow Coefficient (supply + return combined)	Cv 5.5 (Kv 4.8)
Manifold Union	1-1/2" MNPT x G1-1/2" female with flat gasket
End Cap	G1-1/2" female
Ball Valve and Flow Meter Connections	G1" male flat gasket x G1" Eurocone (EK25)
Hose bib Connection	3/4" GHT
Max Glycol Percentage	50%



Installation

Installation must follow all of HeatLink's instructions and guidelines.

Maintenance

Maintenance must follow all of HeatLink's instructions and guidelines.

Related Documents

- 1-1/2" Stainless Steel Manifold Assembly Instructions (L676700)
- HeatLink Limited Heating Warranty

